

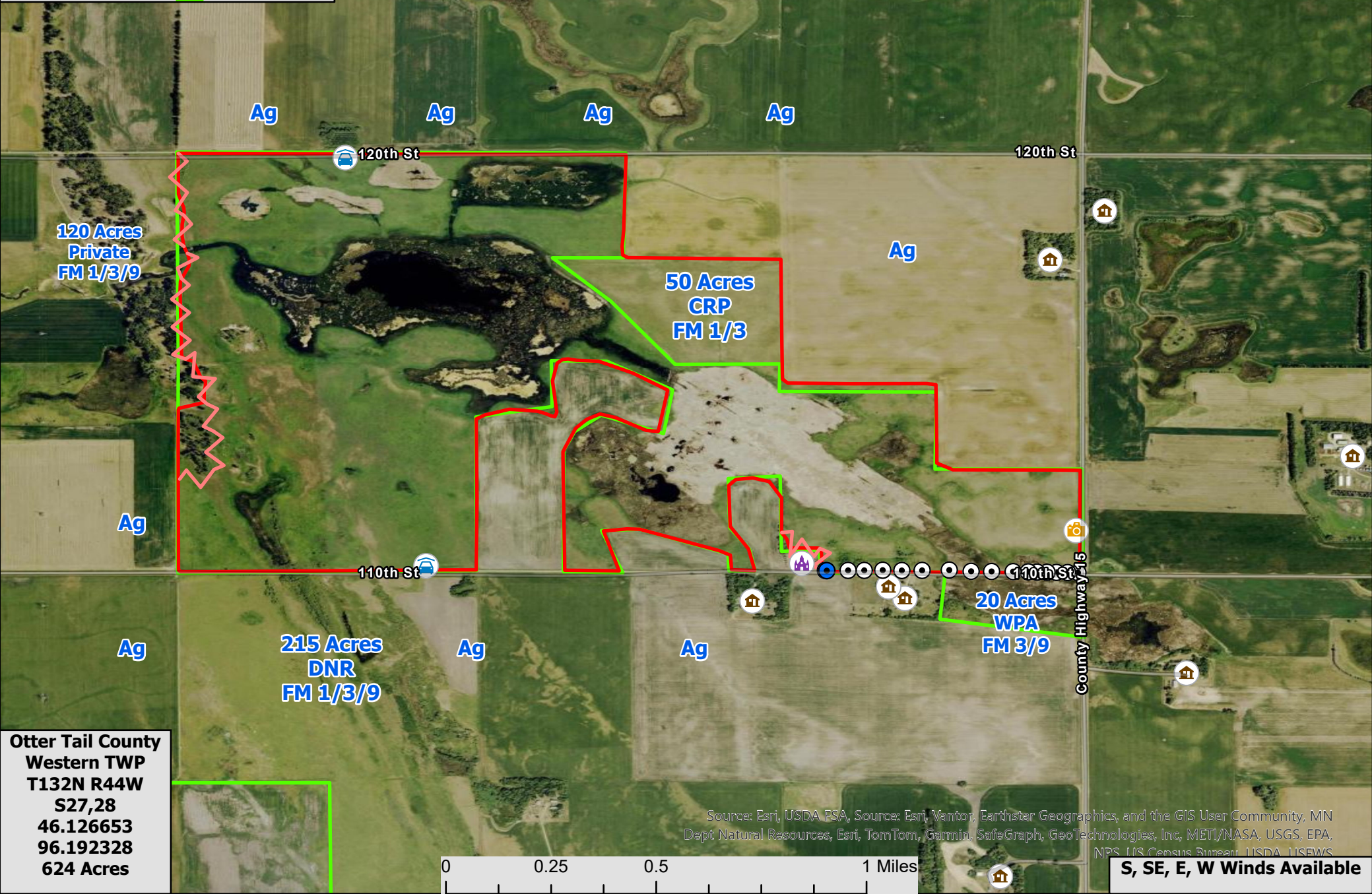
Legend

-  Phone_Box
-  Power_Pole
-  Residence
-  Cemetery
-  WPA_Sign
-  Parking_Lot
-  Control Line
-  Burn Unit
-  WPA



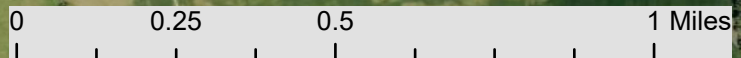
Rabbit River Contingency Map

**Medical Address
House between
DP9 & DP11:
13956 110th St,
Campbell, MN
56522**



**Otter Tail County
Western TWP
T132N R44W
S27,28
46.126653
96.192328
624 Acres**

Source: Esri, USDA FSA, Source: Esri, Vantor, Earthstar Geographics, and the GIS User Community, MN Dept Natural Resources, Esri, TomTom, Garmin, SafeGraph, GeoTechnologies, Inc, METI/NASA, USGS, EPA, NPS, US Census Bureau, USDA, USEWS



S, SE, E, W Winds Available