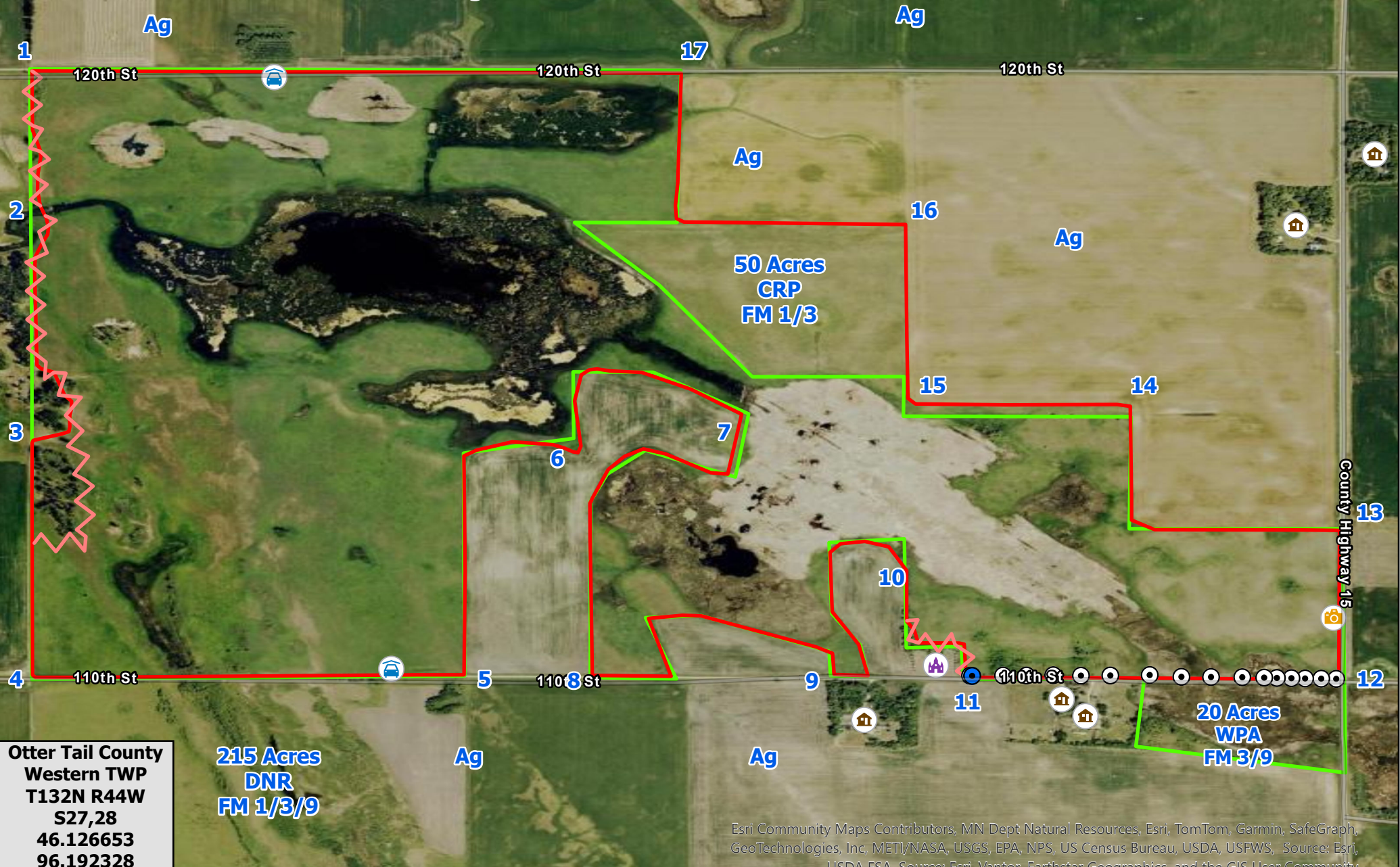


Rabbit River Ops Map

Medical Address
House between
DP9 & DP11:
13956 110th St,
Campbell, MN
56522

Legend

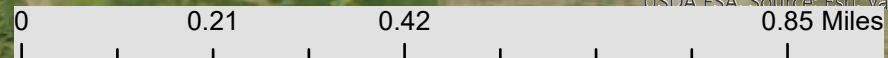
- Phone_Box
- Power_Pole
- Residence
- Cemetery
- WPA_Sign
- Parking_Lot
- Control Line
- Burn Unit
- WPA



Otter Tail County
Western TWP
T132N R44W
S27,28
46.126653
96.192328
624 Acres

215 Acres
DNR
FM 1/3/9

Esri Community Maps Contributors, MN Dept Natural Resources, Esri, TomTom, Garmin, SafeGraph, GeoTechnologies, Inc, METI/NASA, USGS, EPA, NPS, US Census Bureau, USDA, USFWS, Source: Esri, USDA FSA, Source: Fern Vantor, Earthstar Geographics, and the GIS User Community



S, SE, E, W Winds Available