

Stony Brook Contingency Map

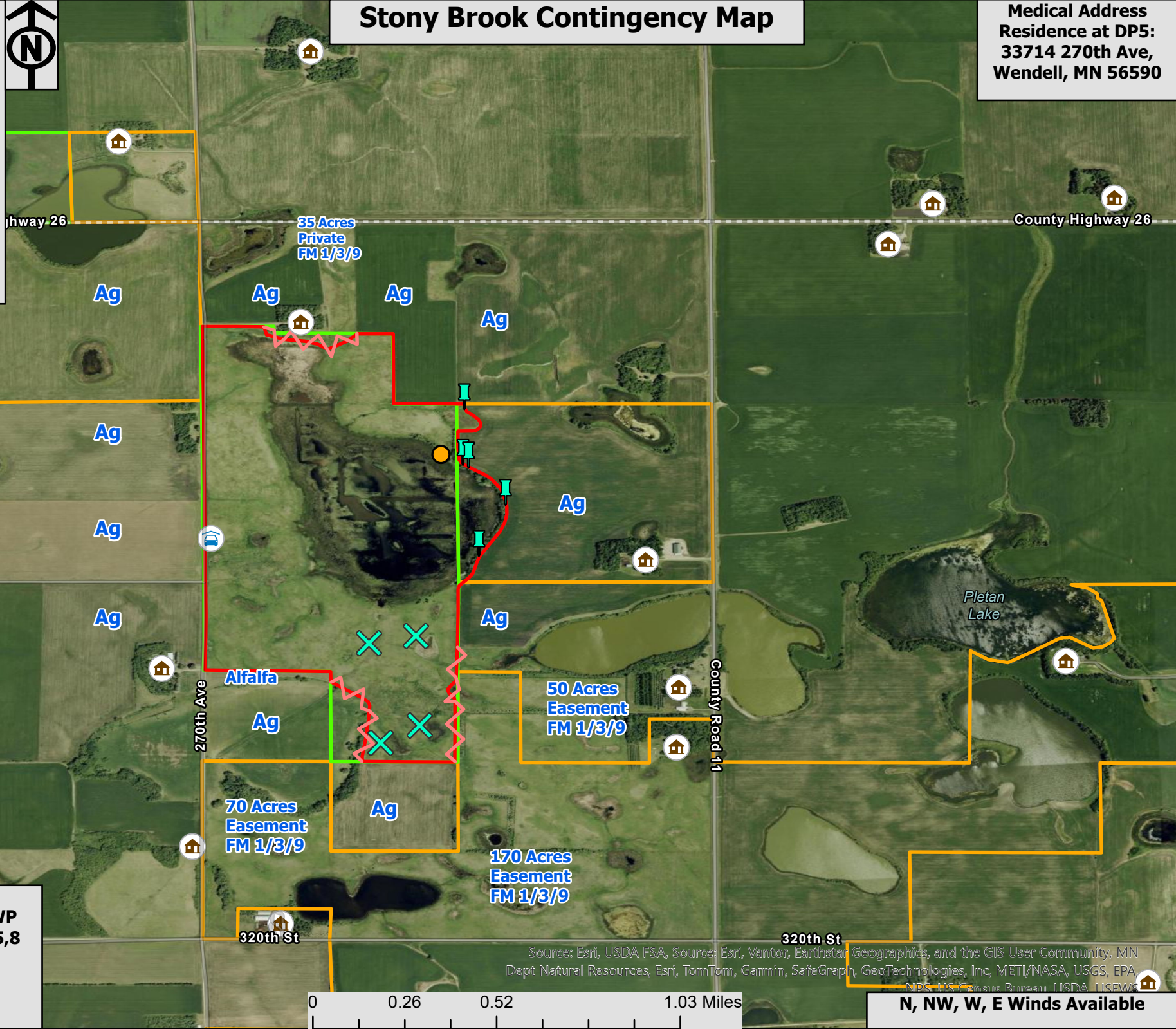
Medical Address
Residence at DP5:
33714 270th Ave,
Wendell, MN 56590

Legend

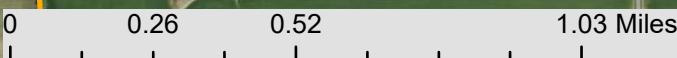
- Tree_Piles
- Residence
- Parking_Lot
- Tile_Outlets
- Eagle_Nest
- Control Line
- Burn Unit

Boundaries

- WPA
- Easement



Grant County
Stony Brook TWP
T130N R43W S5,8
46.098119
96.119905
327 Acres



Source: Esri, USDA FSA, Source: Esri, Vantor, Earthstar Geographics, and the GIS User Community, MN Dept Natural Resources, Esri, TomTom, Garmin, SafeGraph, GeoTechnologies, Inc, METI/INASA, USGS, EPA, NPS, US Census Bureau, USDA, USEWS

N, NW, W, E Winds Available