

Stony Brook Ops Map

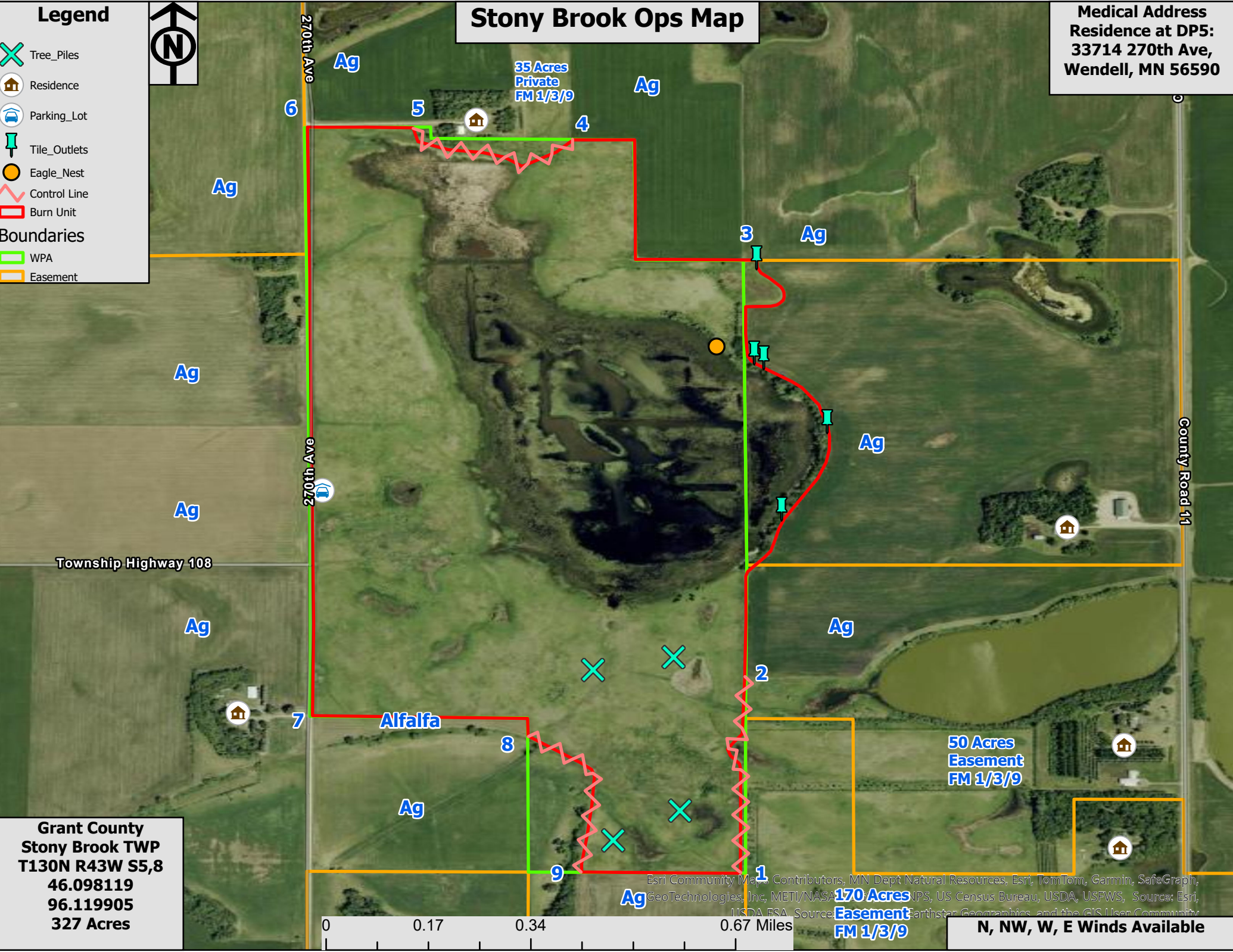
Medical Address
Residence at DP5:
33714 270th Ave,
Wendell, MN 56590

Legend

- Tree_Piles
- Residence
- Parking_Lot
- Tile_Outlets
- Eagle_Nest
- Control Line
- Burn Unit

Boundaries

- WPA
- Easement



270th Ave

County Road 11

Township Highway 108

Grant County
Stony Brook TWP
T130N R43W S5,8
46.098119
96.119905
327 Acres

35 Acres
Private
FM 1/3/9

50 Acres
Easement
FM 1/3/9

170 Acres
Easement
FM 1/3/9

0 0.17 0.34 0.67 Miles

N, NW, W, E Winds Available

Esri Community Maps Contributors, MIN Dept Natural Resources, Esri, TomTom, Garmin, SafeGraph, GeoTechnologies, Inc, METI/NASA, NPS, US Census Bureau, USDA, USFWS, Source: Esri, USDA, Esri, Earthstar Geographics, and the GIS User Community