

Legend

- Pit_Blind
- Deer_Stand
- Power_Pole
- Residence
- Control Line
- Burn Unit

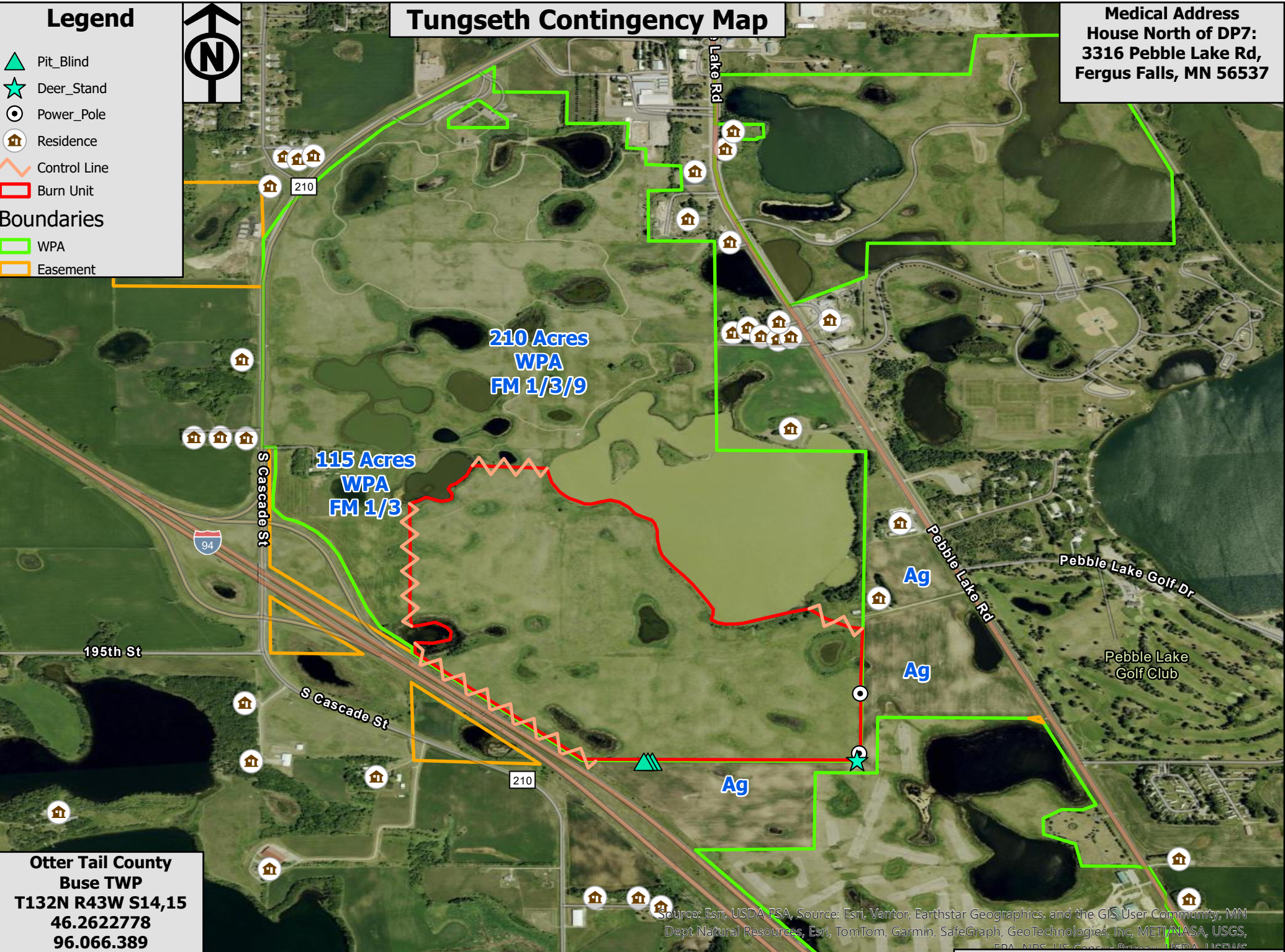
Boundaries

- WPA
- Easement



Tungseth Contingency Map

Medical Address
 House North of DP7:
 3316 Pebble Lake Rd,
 Fergus Falls, MN 56537



Otter Tail County
 Buse TWP
 T132N R43W S14,15
 46.2622778
 96.066.389
 227 Acres



Source: Esri, USDA FSA, Source: Esri, Vantor, Earthstar Geographics, and the GIS User Community, MN Dept Natural Resources, Esri, TomTom, Garmin, SafeGraph, GeoTechnologies, Inc, METI/NASA, USGS, EPA, NPS, US Census Bureau, USDA, NLER&E

SW, W, WNW Winds Available