

Legend

- Pit_Blind
- Deer_Stand
- Power_Pole
- Residence
- Control Line
- Burn Unit

Boundaries

- WPA
- Easement

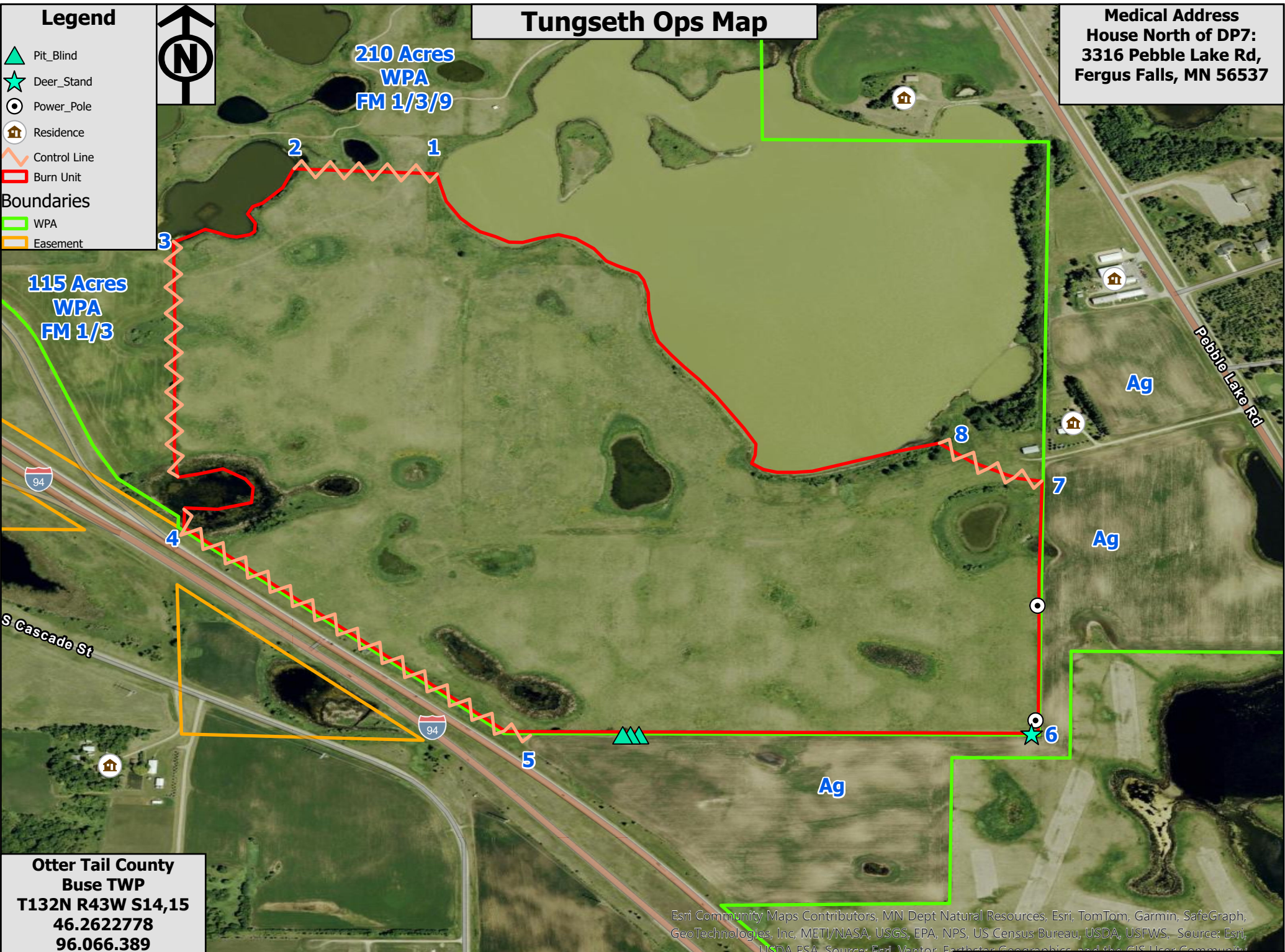


Tungseth Ops Map

Medical Address
 House North of DP7:
 3316 Pebble Lake Rd,
 Fergus Falls, MN 56537

210 Acres
WPA
FM 1/3/9

115 Acres
WPA
FM 1/3



Otter Tail County
Buse TWP
T132N R43W S14,15
46.2622778
96.066.389
227 Acres

Esri Community Maps Contributors, MN Dept Natural Resources, Esri, TomTom, Garmin, SafeGraph, GeoTechnologies, Inc, METI/NASA, USGS, EPA, NPS, US Census Bureau, USDA, USFWS, Source: Esri, USDA FSA, Source: Esri, Vantor, Earthstar Geographics, and the GIS User Community



SW, W, WNW Winds Available