

Wayne National Forest

Fire and Aviation Management



Visitor Briefing Booklet

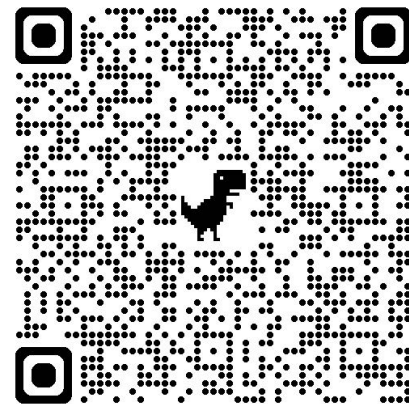
This booklet is intended to familiarize you with this fire organization and the local operating procedures. The Wayne National Forest (WAF) Fire Management Briefing Booklet is comprised of information pertaining to the administrative boundaries of the U.S. Forest Service Lands. This booklet does not include other federal or state agency policies.

Contained within this packet is information related to:

Contents

Maps	3
Useful Links:.....	7
Fire Personnel Contacts.....	9
Forest Information.....	11
Critical Areas/ Issues.....	12
Aviation.....	17
Fire Management Considerations.....	18
Weather.....	21
Safety.....	22
NFDRS: Wayne Staffing and Response Levels.....	22
Dispatch Operations.....	27
Wayne National Forest Frequency List (ARD).....	28
Wayne National Forest Frequency List (IRD).....	29
Wayne National Forest Frequency List (800MHz).....	30
Logistics.....	31

[Incident Organizer](#)



Maps

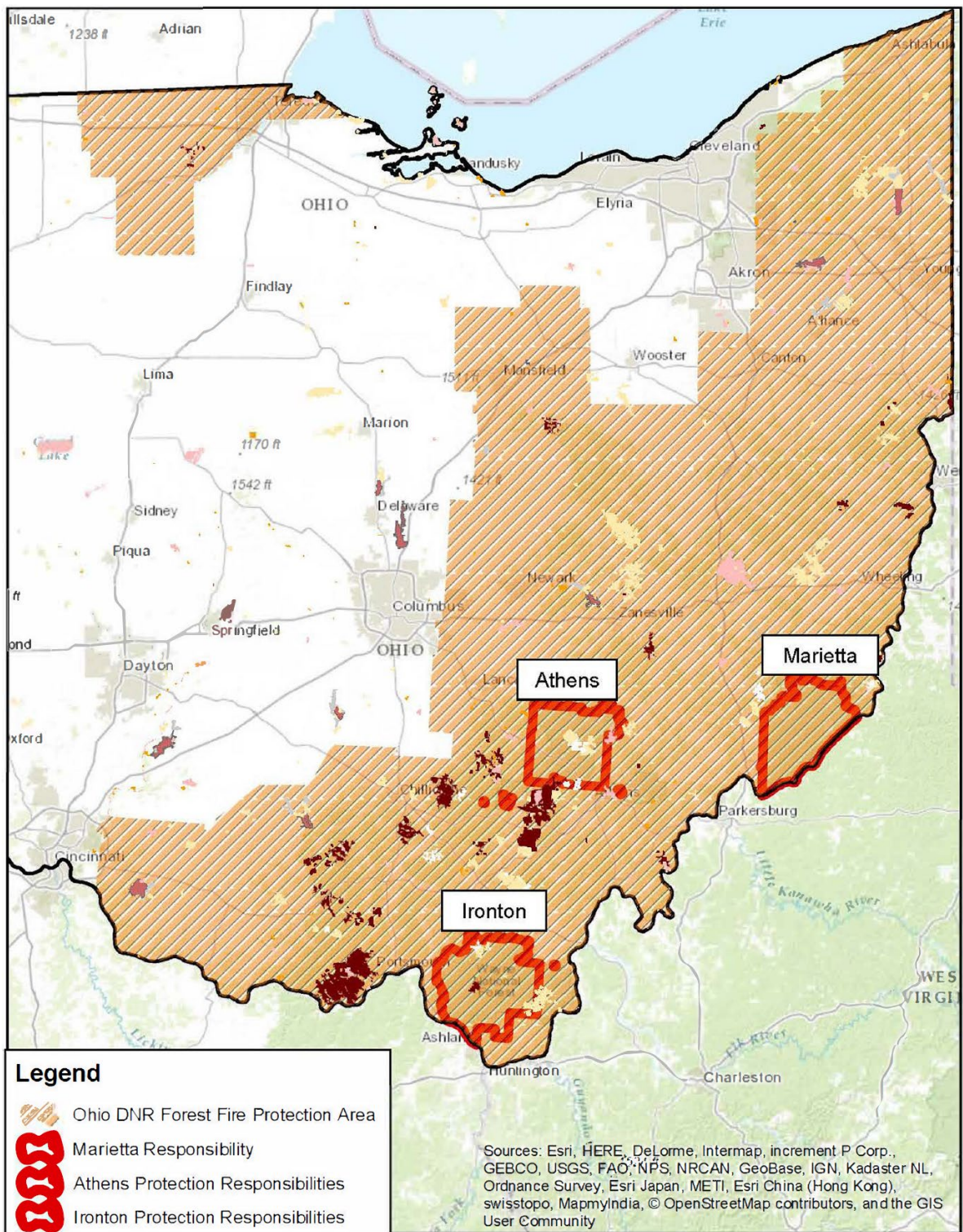


Figure 1: Fire Protection zones

Athens Map

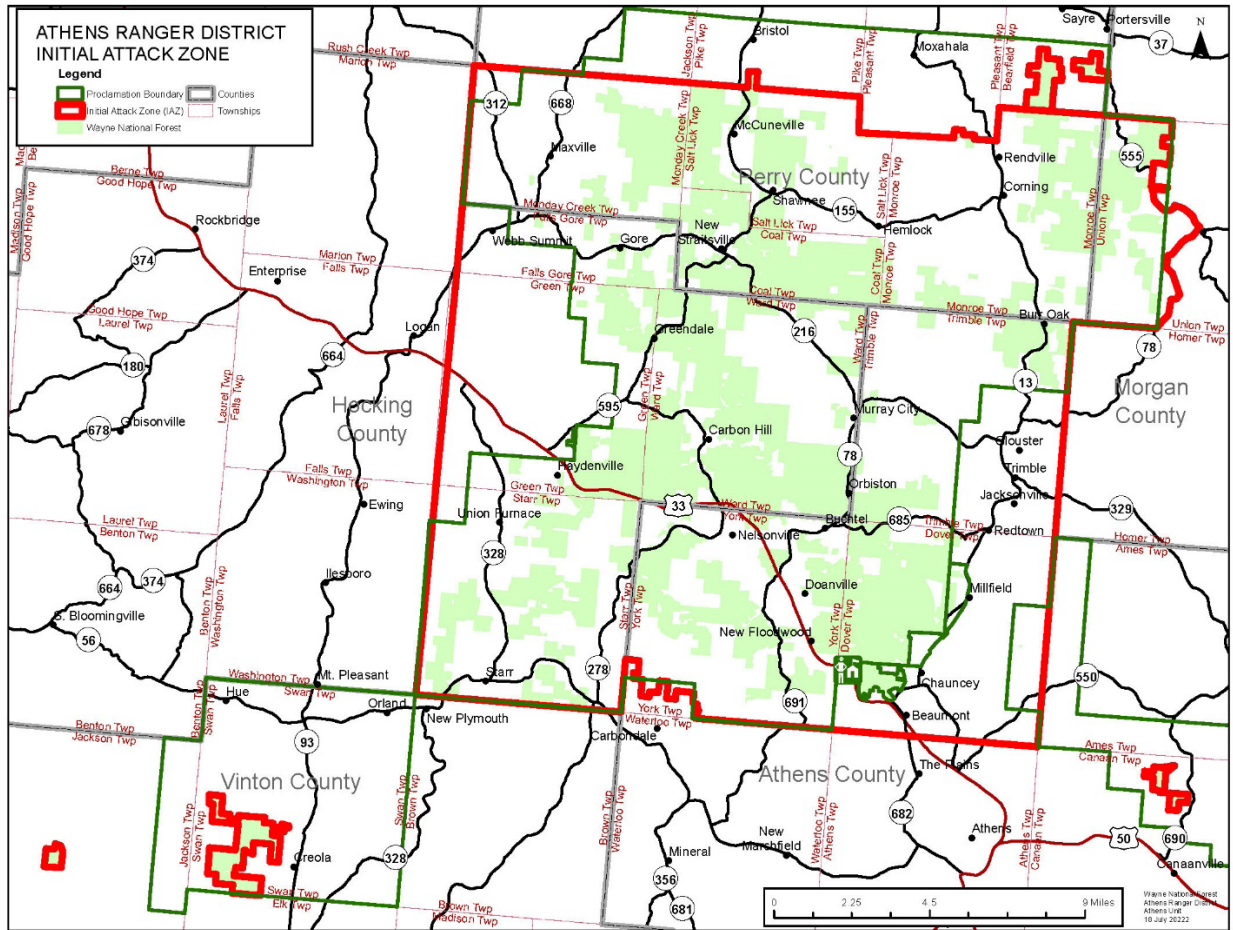
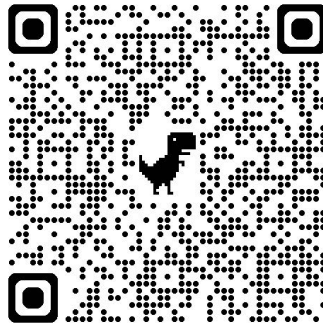


Figure 2: Athens Fire Protection Zone Map



Marietta Map

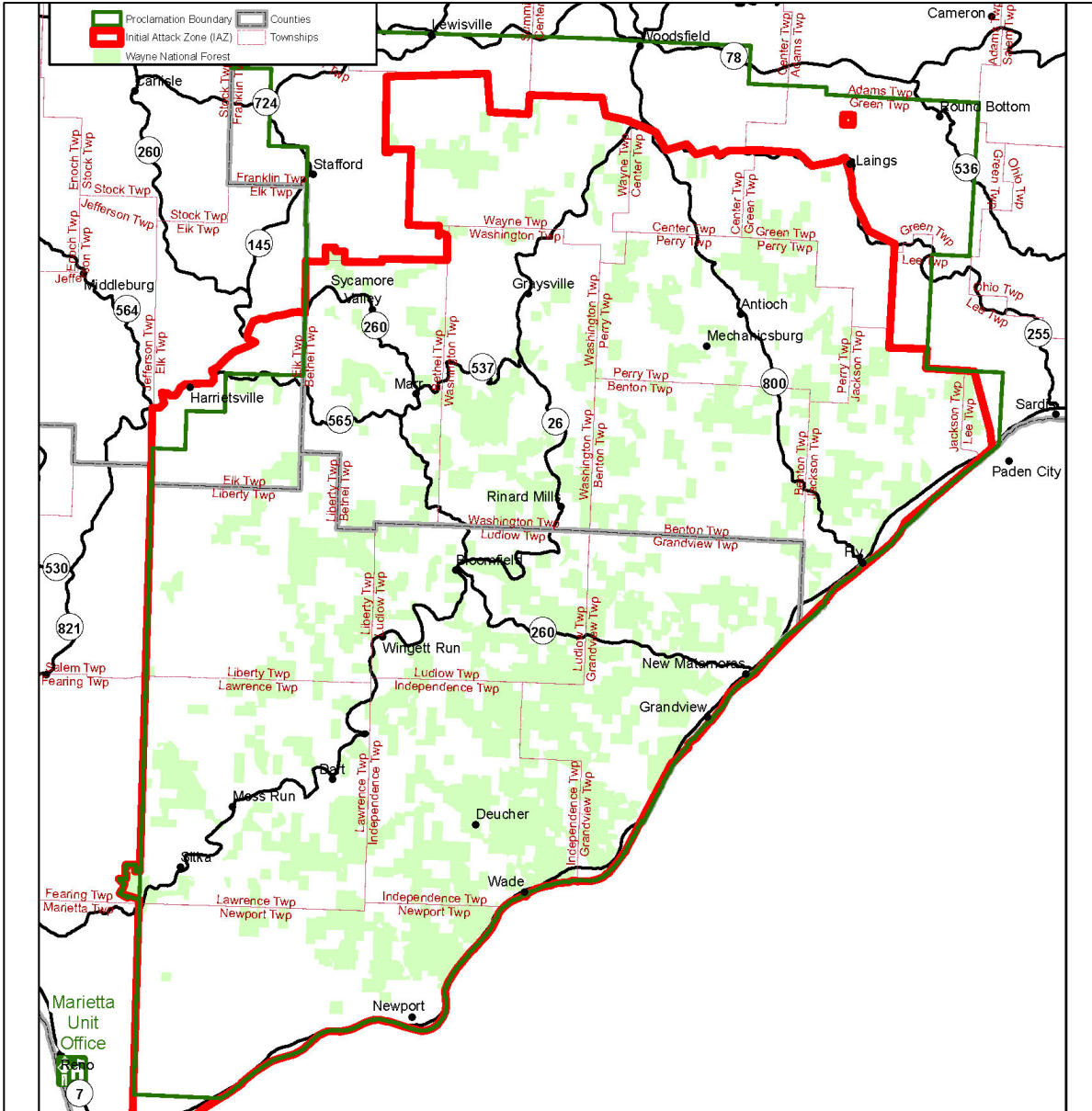
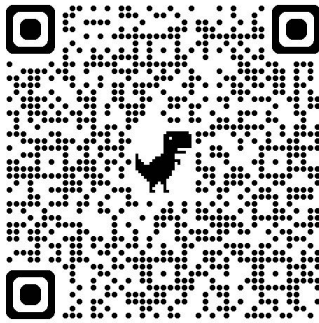



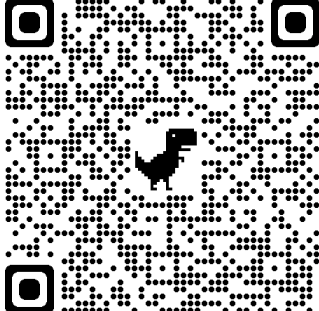
Figure 3: Marietta Fire Protection Zone Map




Useful Links:

<p>Mid Atlantic Coordination Center https://midatlanticfirecompact.com/about-macc/</p>	
--	---

	<p>Fire Weather Dashboard https://www.weather.gov/dlh/fwd</p>
---	--

<p>Eastern Area Coordination Center Fuels and Fire Danger https://gacc.nifc.gov/eacc/predictive_services/fuels_fire-danger/fuels_fire-danger.htm</p>	
--	--

	<p>Wayne National Forest FTP site https://ftp.wildfire.gov/public/incident_specific_maps/eastern/Ohio/</p>
---	--

MACC Resource Intake/Check in

<https://forms.office.com/Pages/ResponsePage.aspx?id=4F2CSwVwPUuaFHhBHyhmA3L8IOJxG4pBoTE8cPFy7WNUMEZZNThGTUFKMTJMNFFLNUNaOVdBNDVUS4u>



Resource Checkout



MACC Resource Check Out

<https://forms.office.com/Pages/ResponsePage.aspx?id=4F2CSwVwPUuaFHhBHyhmA3L8IOJxG4pBoTE8cPFy7WNUQVBURUtXT0YzMFo4N0oxS0M2QIVGRFNOVS4u>

Fire Personnel Contacts

Wayne National Forest Supervisor's Office Main Office Number: 740-753-0101 13700 US HWY 33, Nelsonville, OH 45764 24 HR DUTY OFFICER 740-753-0911	Dispatch 24-hour Number: 717-980-3230 Center ID: PA-MACC pamacc@firenet.gov
--	--

Name	Position	Office	Cell
Lee Stewart	Forest Supervisor	740-753-0880	304-215-2744
Andy Pascarella	Forest FMO	740-753-0918	740-517-5026
Jeremy Waite	Forest AFMO-Ops	740-753-0557	740-270-0264
Tyler Gallagher	Forest AFMO-Fuels	740-753-0918	740-823-0159

Athens RD Main Office: 740-753-0101 13700 US HWY 33, Nelsonville, OH 45764

Name	Position	Office	Cell
Jason Reed	District Ranger	740-753-0403	740-447-3444
Jason Bew	Zone AFMO-BC 11	740-753-0917	740-447-0772

Engine 611			
Sam Daugherty	Engine Captain	740-753-0909	540-616-4793
Matt Castells	FEO	740-753-0547	740-541-7068
James Benson	Asst. FEO	740-753-0556	740-270-8659
Adam Bovia	Senior FFT	740-753-0559	740-270-2483

Marietta Unit Athens RD Main Office: 740-373-9055 27515 State Route 7, Marietta, OH 45750
--

Name	Position	Office	Cell
Jason Reed	District Ranger	740-753-0403	740-447-3444
Jason Bew	Zone AFMO-BC 11	740-753-0917	740-447-0772
Kelly Broadbear	Prevention 21	740-373-5018	740-270-8191

Ironton RD		Main Office: 740-534-6500 6518 State Route 93, Pedro, OH 45659	
Name	Position	Office	Cell
Vacant	District Ranger	740-534-6525	
Scottie Kiser	Zone AFMO-BC 31	740-534-6547	740-541-0024
Engine 631			
Jason Simms	Engine Captain	740-534-6545	740-270-9862
Will Foster	FEO		970-218-5447
Stephen Perrine	Asst. FEO		440-812-4804
Vacant	Senior FFT	740-534-6557	330-321-6409
Engine 632			
Chris Stefanides	Engine Captain	740-534-6530	740-270-5238
Cody Cellentani	FEO	740-534-6555	740-270-8106
Vacant	Asst. FEO	740-534-6540	
Kedar Olds	Apprentice		919-948-8819

MID ATLANTIC COORDINATION CENTER		Main Office: 717-980-3230 1310 ELMERTON AVE, HARRISBURG, PA. 17107	
Name	Position	Office	Cell
Tracy Allen	Center Manager	717-980-3231	740-270-4491
Jake Glick	Asst. Center Manager	717-980-3232	717-480-1440
Markies Smith	IA Dispatcher	717-980-3233	737-836-9010
Darrin Donahue	IA Dispatcher	717-980-3234	
Brendan Pisani	Logistics Dispatcher	717-980-3236	
Brett Chouinard	Logistics Dispatcher	717-980-3238	223-231-6444
Judith Sadowski	Fire Business		740-270-0572

Forest Information

Forest Overview

The Wayne National Forest is made up of two Ranger Districts in Southeast Ohio. The Athens Ranger District (137,136 acres total) consists of two units, the Athens unit (72,469 acres) and the Marietta unit (64,667 acres). The Ironton Ranger District is 107,090 acres. All total the Wayne National Forest is comprised of 244,240 acres.

The Wayne National Forest resides within a forest system with intermixed jurisdictions of state and private lands. Through the Ohio Master Cooperative Agreement and Annual Operating Plan, the Wayne National Forest Initial Attack areas encompass 742,000 total acres of Federal, State and Private lands, within the “red line,” (see Figure’s 1-4 above). Both Ranger Districts have significant Wildland Urban Interface. The elevation range on the Wayne National Forest is approximately 523’ to 1368’.

Desired Condition and Goals

The Wayne National Forest Fire and Aviation Management Program’s goal is to always provide for firefighter and public safety first. The Forest and Fire Management program personnel will make every attempt to mitigate unnecessary risk exposure to all associated resources and personnel. Furthermore, losses and resource damage will be kept to a minimum in managing fire suppression activities and costs will be appropriate for values at risk.

General Discussion

The Wayne National Forest is comprised of the most contiguous areas of forested land in the State. The immediate jurisdictions of suppression include the US Forest Service, Ohio Department of Natural Resources (ODNR) Division of Forestry incorporated municipalities / towns / villages. Although the Initial Attack zones are identified, and we operate under the closest resource concept, this can also present complex situations for responding forces. Due to multiple land jurisdictions an apparent Type 4 incident can quickly evolve into multiple land ownerships creating a complex delegation and numerous resource concerns.

Accurate and timely incident location will resolve much confusion regarding the jurisdictional agency and the cooperators.

Critical Areas/ Issues

As stated above, the Wayne National Forest has considerable areas of Wildland Urban Interface (WUI). Local and interstate traffic can cause response delays as well as concerns with smoke and/or traffic management issues. Traffic congestion, tourists, etc. can result in safety considerations and delays for responding resources. The Wayne National Forest is checker-boarded with private land, and although relatively “rural” there are numerous state and county highways and residences throughout the proclamation boundary. The Wayne National Forest has significant recreation user pressure year-round which can present challenging logistical and suppression concerns. Be aware that you may not have communication with our cooperators due to differences in frequencies. Be prepared to do a face-to-face meeting with on-scene cooperators and possibly borrow a radio from them.

Area Resources

- The Wayne National Forest is partner to the Ohio Master Cooperative Agreement and an Annual Operating Plan with the state of Ohio which pre-identifies fire resources compliant with 310-1.
- We maintain three Type 6 Engines and 1 Prevention/Patrol asset.
 - 1 Type 6 Engine in Nelsonville, OH on the Athens Ranger District-Athens Unit
 - 1 Prevention/Patrol unit on the Marietta Unit
 - 2 Type 6 Engines in Pedro, OH on the Ironton Ranger District.
- An incident escalating from Type 4 to Type 3 or higher will require us to order or assemble an Ad hoc Type 3 IMT.
- There is one Complex Incident Management Team in Region 9.

Aviation

Aviation Operations

All aircraft used on the Forest will be ordered through the MID-ATLANTIC COORDINATION CENTER (PA-MACC). Use of aerial resources can be part of an aggressive suppression response; however many things should be considered before ordering aircraft. Do not develop your strategy and tactics dependent on aircraft. Many factors can affect the timely use of aircraft (weather, availability, other priorities, etc.). We practice Safety Management System (SMS) in the use of aircraft. Be aware that though aviation accidents are usually very unlikely, their consequences are catastrophic. Ensure that when you order and utilize aviation resources that you are not doing so to transfer risk from ground-based firefighters to aviators.

Aviation Resources

If you need aviation resources, contact dispatch for availability.

Emergency Medical Aircraft

Call Dispatch to order medical or extraction aircraft. Remember to reference the Medical Incident Report on page 120 of your (January 2025) IRPG with patient information when ordering medical or extraction aircraft.

Communications

National Flight Following 168.6500, TX and RX Tone 110.9 is used by Dispatch for flight following, dispatch, and/or redirection of aircraft, and some minor ground to air administrative traffic.

Fire Management Considerations

Partnerships

The Wayne annually coordinates with the Ohio Department of Natural Resources-Division of Forestry and local Volunteer Fire Departments to establish guidelines for implementing fire management practices. Interagency cooperation is essential in maintaining a safe, efficient and cost-effective fire management program. The Ohio Master Cooperative Wildland Fire Management and Stafford Act Response Agreement (Master Agreement) and Annual Operating Plan guide interagency response to wildland fires in Ohio.

Fire Management Strategy

Per recent direction in the Fire Management Boards "FMB Memorandum No. 26-001," under current federal policy, there are only two types of wildland fire:

- **Prescribed Fire** – A Wildland fire originating from a planned ignition in accordance with applicable laws, policies, and regulations to meet specific objectives.
- **Wildfire** – A wildland fire originating from an unplanned ignition, such as lightning, volcanos, unauthorized and accidental human caused fires, and prescribed fires that are declared wildfires.

Suppression Strategy Types -

- **Direct Extinguishment Strategy** - Firefighters engage the active flame front directly to stop fire spread.
- **Indirect Confinement Strategy** - Firefighters work away from the active flame front to steer or contain the fire.

The standard protocol here on the Wayne National Forest should be the direct extinguishment strategy, unless it is determined that cannot safely be accomplished. If an indirect confinement strategy is needed, start the immediate process to implement that, but the Incident Commander needs to notify the Forest Duty Officer as soon as possible, who will notify the Agency Administrator.

Oil and Gas Protocols

You will be given a Standard Operating Procedures guide for Oil and Gas Operations. If you are not given one, please ask for one.

Potential Fire Behavior

The Wayne National Forest typically has 2 distinct fire seasons – Fall and Spring. Fall fire season typically begins around October 1 and runs until early December. Spring fire season typically begins in Mid-February and runs into early to mid-May. Fires may occur outside of the typical fire season during dry periods (seasonal or persistent drought).

The Forest averages 40-60 fires per year, with human causes accounting for more than 90% of wildfire ignitions.

Of these fires, Initial Attack resources usually successfully suppress the majority at less than 10 acres.

Most fires start out as creeping/running surface fires; then, during extreme weather conditions (persistent or seasonal drought, wind) they can transition from surface spread into the crowns of shrubs and trees leading to extreme fire behavior and the highest resistance to control by suppression resources. Several days without rain, strong winds, low relative humidity are usually the catalysts for these types of events and elevate moderate fire danger to high or extreme leading to the potential for large fires with unwanted fire effects. These infrequent events typically burn at high fire intensity and result in incidents on a larger scale/longer duration. You may encounter GOB piles (overburden or low-quality coal that was left behind during mining operations) during fire operations. Let the IC know if you encounter GOB piles.

The Forest monitors the likelihood of these unwanted fires by following trends in NFDRS Indices: Energy Release, Ignition Component, Spread Component and climatology factors such as Minimum RH and days since rain, and windspeeds. These Indices serve as indicators for the potential of extreme fire behavior occurrence. KBDI values above 400 and ERC values of 30 or higher are indicators of potential extreme fire behavior.

Fire Management Situation

Weather patterns influencing fire behavior

Dry conditions usually occur between October 1 and December 1 in the Fall and between February 15 to May 15 in the Spring. These fire seasons

correspond to “leaf-off” – after the leaves fall in the Fall and before they come on in the Spring. Leaf-off allows sunlight to reach the forest floor (heat and drying), and the leaves on the surface provide fuels. Fires typically occur after short-term dry periods when the relative humidity is low. Without wind these fires are typically fuel and/or slope driven. Fires can and do occur during summer months if conditions are dry (seasonal or persistent drought).

Fuel conditions

In typical Fall and Spring fire seasons dead leaves and needles on the surface provide the primary fuel to carry fires (Fuel Models (FM) 6, 8, and 9). Some other fine fuels (cured grasses, sedges) can contribute. Also, down woody debris (10-hour fuels) that are cured will also burn. Jackpots of fuel can provide fire brands with wind but typically do not contribute to fire spread beyond the pile. Live fuels are at their lowest during Spring before bud break. They are also low during the Fall going into dormancy. During drought conditions crown fires can become a factor with the right conditions.

Agency Management Considerations

The Wayne National Forest regularly coordinates with other State and private agencies. Due to decisions within each entity’s management plans the fire management programs differ concerning managing wildland fire for multiple objectives. Because agency policies differ, coordination between the Forest and these agencies will occur during all fire management activities, (e.g., prescribed fire, wildland fire suppression activities, etc). This might require adjusting management objectives for all, or part of an unplanned ignition at agency jurisdictional boundaries or fire management unit boundaries.

IC’s need to relay to Fire Management staff if suppression efforts are likely to exceed the 24-hour mutual aid period so that we can have the Agency Administrators begin discussing cost share agreement needs.

Weather

Local Fire Weather

The Wayne National Forest is served by the National Weather Service Office located in Charleston, WV (RLX); Wilmington, OH (ILN); and Pittsburg, PA (PBZ). The daily forecast will be posted electronically by the National Weather Service in the mornings and evenings throughout the fire season. The forecast will also be emailed and transmitted via radio by MACC dispatch.

Spot Weather Forecast

Spot weather forecasts are available upon request at any time from the National Weather Service. Complete a spot weather form with weather observations taken at the site.

Fire Weather Watch

A Fire Weather Watch is issued to alert the possible development of a significant fire weather event within the next 18 to 96 hours. The fire weather watch will be headlined in a routine forecast or possibly issued as a special forecast and will remain in effect until the weather event is upgraded to a red flag warning or conditions fail to develop.

Red Flag Warning

A red Flag Warning is issued within 48 hours of expected conditions, or the actual onset of these conditions. The following Red Flag Event criteria consist of both fuel and weather parameters and need to be coordinated with each issuance:

- Ten-hour fuel moisture must be at or below 8%.
- Relative humidity must be equal to or less than 25%.
- Surface wind speeds (sustained or gusts) must equal or exceed 15 mph.
- The above conditions must be met for at least 2 consecutive hours for a red flag event to be verified.

Safety

Wayne National Forest Emergency Medical Evacuation Plan

This is a separate stand-alone plan that is provided to all employees and incoming resources. If you do not have a copy, please request one from the unit to which you are assigned. The primary goal of this plan is to assist forest personnel in responding to an emergency. The checklist will ensure that all personnel involved understand their role in the emergency and who they must be in contact with.

Remember:

- All emergency radio traffic will have priority over other traffic.
- Names of injured or deceased individuals will not be used on the radio.
- Use of crew names or designators should be limited.
- In the event of an accident or fatality, a deceased individual and their equipment are not to be moved except to accomplish rescue work or to protect the health and safety of others.

NFDRS: Wayne Staffing and Response Levels

NFDRS V4, the Fire Environment Mapping System (FEMS) which has replaced WIMS, and the Ohio Interagency Fire Danger Operating Plan are utilized to make Staffing and Response level decisions.

Fuel Model Y (Timber) is the Year-round fuel model, The Spring and Fall seasons were evaluated in conjunction with Summer (2/15 – 11/15) in the most recent Fire Danger Operating Plan. The Index calculations change if we have a dry winter to Winter Indices (11/16 – 2/14).

Preparedness Level: ERC-Y and KBDI, Initial Attack and Extended Attack Fire Business workload, and other significant influences.

Fire Danger Rating: How we inform the public utilized ERC-Y and IC-Y

Staffing Level: Ignition Component and Min RH

Response Level: Staffing Level and Spread Component

Staffing Level

The Staffing Level for each day will be sent out in the Ohio Daily Fire Weather briefing, emailed out by the Wayne Forest Duty Officer each morning during each of the fire seasons (Fall, Spring). Extended staffing decisions are made by the Forest Duty Officer and announced by MACC dispatch over the radio and via text. Staffing actions are below:

Wayne National Forest Actions

Staffing Level	Minimum Staffing Levels			Authorized Actions
	Engines	Crews / I.A. Squads	Collateral Duty Squads	
1	0	1	0	1-a. Manage Daily Staffing to ensure resources are available 1-b. Routine readiness standards apply to all personnel and equipment 1-c. Fire program staff report on normal work schedules
2	1	1	0	2-a. Manage Daily Staffing to ensure resources are available 2-b. Fire program staff report on normal work schedules 2-c. Detection: <ul style="list-style-type: none"> • Ground Resources Authorized 2-d. Field going personnel may need to alter activities during the day to increase readiness
3	2	1	0	3-a. Manage daily staffing to ensure resources are available 3-b. Extended Staffing Authorized*, Duty Officer's discretion but in conjunction with Response Level, SL-3 RL-LOW: NO, SL-3 RL MOD or RL-HIGH: YES or 3-c. Begin shifted work schedules (report at 1000 rather than 0800) and possibly shift to 7-day coverage 3-d. AD hiring Authorized for local needs 3-e. Field-going personnel alter activities during the day to increase readiness 3-f. Detection: <ul style="list-style-type: none"> • Ground Resources Authorized • Fixed and Rotor Wing Authorized 3-g. Preposition of resources authorized for 1 operational period
4	3	1	2	4-a. Manage daily staffing to ensure resources are available 4-b. Extended staffing authorized until 1800* 4-c. If trends look like long term daily Staffing Level 3+, implement shifted schedules and 7-Day staffing 4-d. AD hiring Authorized for short term assignments to mitigate draw-down levels. 4-e. Detection: <ul style="list-style-type: none"> • Ground Resources-Authorized Fixed and Rotor Wing-Recommended 4-f. Preposition of resources authorized.

5	3	2	2	5-a. Manage daily staffing to ensure resources are available 5-b. Extended staffing authorized until 1900* 5-c. If trends look like long term daily Staffing Level 3+, implement shifted schedules and 7-Day staffing 5-d. All qualified personnel should be available to support wildfire activity 5-e. Detection is authorized and recommended 5-f. Preposition of resources authorized 5-g. AD hiring authorized
----------	---	---	---	---

Response Levels


The Response Level for each day will also be disseminated in the Ohio Daily Fire Weather briefing. Recommended response actions are below:

Response Level/Dispatch Level Action Plan

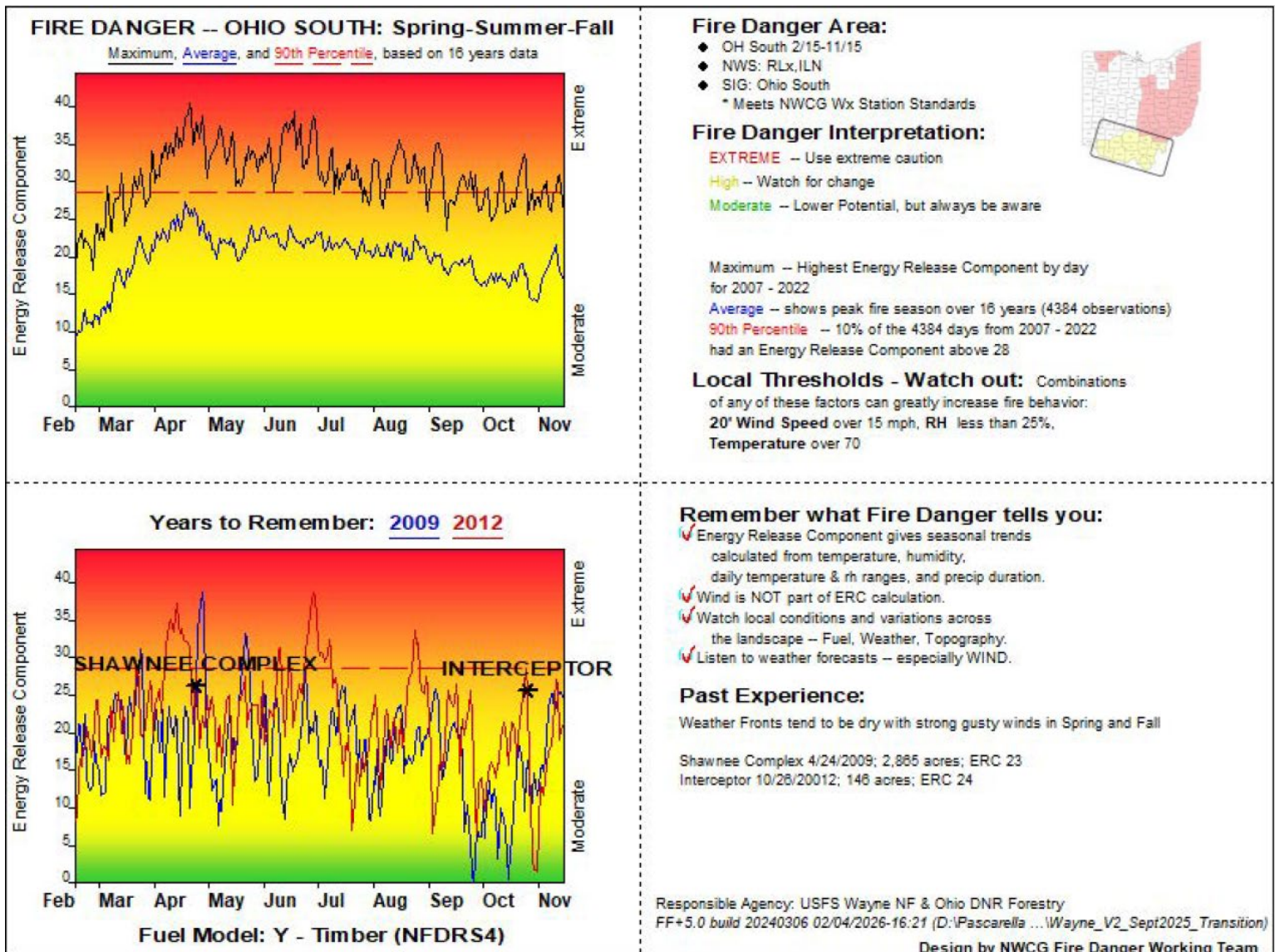
Response [Dispatch Level]	LOW	MODERATE	HIGH
Recommended minimum resource(s) per single Fire	ICT5 + 2 FFT2	ICT5 + Engine Module or Initial Attack Squad	ICT4 + Engine Module + Initial Attack Squad + INITIATE STANDBY RESOURCES (bump and cover)

POCKET CARDS

NORTH

<p>FIRE DANGER -- OHIO NORTH: Spring-Summer-Fall Maximum, Average, and 90th Percentile, based on 16 years data</p> <p>Energy Release Component</p> <p>Extreme</p> <p>Moderate</p> <p>Feb Mar Apr May Jun Jul Aug Sep Oct Nov</p>	<p>Fire Danger Area:</p> <ul style="list-style-type: none"> ◆ OH NORTH 2/15-11-15 ◆ NWS: RLX, ILN, PBZ, CLE ◆ SIG: Ohio North * Meets NWCG Wx Station Standards <p>Fire Danger Interpretation:</p> <p>EXTREME -- Use extreme caution</p> <p>High -- Watch for change</p> <p>Moderate -- Lower Potential, but always be aware</p>  <p>Maximum -- Highest Energy Release Component by day for 2007 - 2022</p> <p>Average -- shows peak fire season over 16 years (4384 observations)</p> <p>90th Percentile -- 10% of the 4384 days from 2007 - 2022 had an Energy Release Component above 27</p> <p>Local Thresholds - Watch out: Combinations of any of these factors can greatly increase fire behavior:</p> <ul style="list-style-type: none"> 20' Wind Speed over 15 mph, RH less than 25%, Temperature over 70
<p>Years to Remember: 2021 2022</p> <p>Energy Release Component</p> <p>Extreme</p> <p>Moderate</p> <p>Feb Mar Apr May Jun Jul Aug Sep Oct Nov</p> <p>BURTON</p> <p>22</p> <p>76213</p> <p>Fuel Model: Y - Timber (NFDRS4)</p>	<p>Remember what Fire Danger tells you:</p> <ul style="list-style-type: none"> ✓ Energy Release Component gives seasonal trends calculated from temperature, humidity, daily temperature & rh ranges, and precip duration. ✓ Wind is NOT part of ERC calculation. ✓ Watch local conditions and variations across the landscape -- Fuel, Weather, Topography. ✓ Listen to weather forecasts -- especially WIND. <p>Past Experience:</p> <p>Burton Fire 4/7/2013; 54 acres; ERC 29</p> <p>22 Fire 8/13/2021; 50 acres; ERC 22</p> <p>76213 Fire 11/10/2022; 45 acres; ERC 24</p> <p>Responsible Agency: USFS Wayne N.F. & Ohio DNR-Forestry FF+5.0 build 20240306 02/04/2026-16:03 (D:\Pascarella ...Wayne_V2_Sept2025_Transition)</p> <p>Design by NWCG Fire Danger Working Team</p>

South



Dispatch Operations

General

The principal mission of the MID ATLANTIC COORDINATION CENTER (MACC Dispatch) is the timely and effective coordination and dispatching of resources to any incident within or outside Ohio. All incidents will be managed according to policies and guidelines established in the MACC Dispatch Standard Operating Guidelines.

The dispatch center will be staffed accordingly during fire season. If even one district is staffing, dispatch will be open to provide support. Normal hours of operation are 0800-1630, but the dispatch center can be utilized on a 24/7 basis as needed and maintains an "On-Call" Duty Officer after hours. Furthermore, an expanded dispatch will be established during periods of increased workload and/or fire danger.

Location:

Address: 1310 ELMERTON AVE, HARRISBURG, PA.

Dispatch Contact Phone Numbers

Unit Designator: PA-MACC
24-Hour Number: (717) 980-3230
Email PAMACC@firenet.gov

Wayne National Forest Frequency List (ARD)

Athens/Marietta

Radio Communication Plan
Zone 02

Wayne National Forest
Athens Fire Management

Date Prepared 02-08-2021

CH #	Channel Name	RX Freq	RX Tone/NAC	TX Freq	TX Tone/NAC	Function
1	Athens	169.90000	110.9	164.82500	110.9	Athens Repeater
2	Scatter Ridge	169.90000	110.9	164.82500	136.5	Athens Repeater
3	Marietta	169.90000	123.0	164.82500	123.0	Marietta Repeater
4	Ath Mob	169.90000	110.9	164.82500	179.9	Athens Mobile Rpt
5	Mar Mob	169.90000	123.0	164.82500	186.2	Marietta Mobile Rpt
6	Work 1	163.71250	None	163.71250	None	Non Fire Work Channel
7	Work 2	168.61250	None	168.61250	None	Non Fire Work Channel
8	Fire Tac	168.15000	None	168.15000	None	Tactical Fire Channel
9	R9 Fire	166.56250	None	166.56250	None	Tactical Fire Channel
10	Glouster	156.23250	151.4	159.31500	151.4	MA Fire Channel
11	Nelsonville	155.07000	186.2	159.15750	186.2	MA Fire Channel
12	Amesville	151.15250	131.8	159.00750	131.8	MA Fire Channel
13	Hocking	154.21250	103.5	000.00000	None	MA Fire Channel
14	M/M Fire	154.37000	None	000.00000	None	MA Fire Channel
15	A/G 90	166.50000	None	166.50000	None	Air to Ground Primary
16	Air Guard	168.62500	None	168.62500	110.9	Aviation Emergency

Wayne National Forest Frequency List (IRD)

Ironton

Radio Communication Plan
Zone 03

Wayne National Forest
Ironton Fire Management

Date Prepared 02-08-2021

CH #	Channel Name	RX Freq	RX Tone/NAC	TX Freq	TX Tone/NAC	Function
1	ATHENS	169.90000	110.9	164.82500	110.9	Athens Repeater
2	SCATTER	169.90000	110.9	164.82500	136.5	Athens Repeater
3	MARIETTA	169.90000	123.0	164.82500	123.0	Marietta Repeater
4	IRONTON	169.90000	131.8	164.82500	131.8	Ironton Repeater
5	IRD MOB	169.90000	131.8	164.82500	192.8	Ironton Mobile Rpt
6	WORK 1	163.71250	None	163.71250	None	Non Fire Work Channel
7	WORK 2	168.61250	None	168.61250	None	Non Fire Work Channel
8	FIRE TAC	168.15000	None	168.15000	None	Tactical Fire Channel
9	R9 FIRE	166.56250	None	166.56250	None	Tactical Fire Channel
10	LC GRND	154.01000	103.5	154.01000	103.5	County Fire Tac 3
11	LC CMD	154.20500	103.5	154.20500	103.5	County Fire Tac 2
12	LC 911	154.20500	103.5	151.31000	103.5	County Fire Dispatch
13	GALIA911	155.29500	91.5	000.00000	None	County Fire Dispatch
14	IRD WX	162.55000	None	000.00000	None	Weather
15	A/G 90	166.50000	None	166.50000	None	Air to Ground Primary
16	AIR GRD	168.62500	None	168.62500	110.9	Aviation Emergency

Wayne National Forest Frequency List (800MHz)

800 - Multi-Agency Radio Communications

Radio Communication Plan 800 MARCS		
Wayne National Forest		
Prepared 03-24-2025		
CH#	Zone 1 -Work Unit	
1	WNF-CMD	Wayne NF Command
2	WNF-TAC1	Wayne NF Tac 1
3	WNF-TAC2	Wayne NF Tac 2
4	FR-MA-DE	Maintenance - Dean State Forest
5	FR-MA-SH	Maintenance - Shawnee State Forest
6	FR-MA-PI	Maintenance - Pike State Forest
7	FR-MA-ST	Maintenance - Scioto Trail State Forest
8	FR-MA-ZA	Maintenance - Zaleski State Forest
9	FR-MA-HO	Maintenance - Hocking State Forest
10	FR-MA-ND	Maintenance-North District
11	FR-FI-DE	Fire- Dean State Forest
12	FR-FI-SH	Fire - Shawnee State Forest
13	FR-FI-PI	Fire - Pike State Forest
14	FR-FI-ST	Fire - Scioto Trail State Forest
15	FR-FI-ZH	Fire - Zaleski State Forest
CH#	Zone 2-Athens	
1	WNF-CMD	Wayne NF Command
2	WNF-TAC1	Wayne NF Tac 1
3	WNF-TAC2	Wayne NF Tac 2
4	XATNSFD1	Athens (City) Fire Dispatch
5	Xblank	
6	FD37OPS1	Hocking CO Fire TAC 1
7	FD37OPS2	Hocking CO Fire TAC 2
8	FD37OPS3	Hocking CO Fire TAC 3
9	FD37OPS4	Hocking CO Fire TAC 4
10	XEMS37DP	Hocking CO EMS Dispatch
11	XFD64DISP	Perry CO Fire Dispatch
12	XFD64S	Perry CO Fire Operations - South
13	X82ZALFD	Zaleski Fire Department
14	X82-FIRE	Vinton Co Fire Dispatch
CH#	Zone 3-Ironton	
1	WNF-CMD	Wayne NF Command
2	WNF-TAC1	Wayne NF Tac 1
3	WNF-TAC2	Wayne NF Tac 2
4	FD44DISP	Fire Dispatch
5	44COTAC1	Lawrence CO Tac 1
6	44COTAC2	Lawrence CO Tac 2
7	X73-FIRE	Scioto County Fire Dispatch
8	73FDTAC1	Scioto County Fire TAC 1
9	73FDTAC2	Scioto County Fire TAC 2
10	EMSPaging	Scioto County EMS Paging
11	XFD27DISP	Gallia 911
12	XFD27TCI	Gallia Tac
13	FD27PG1	Gallia Co Paging
14	EMS27DISP	Gallia Dispatch

Logistics

Airports

- Columbus International Airport (CMH)
4600 International Gtwy., Columbus, OH 43219
- Cincinnati/Northern Kentucky International Airport (CVG)
3087 Terminal Drive, Hebron, KY 41048
- Yeager Airport (CRW)
100 Airport Rd., Suite 175, Charleston, WV 25311
- Huntington Tri-State Airport (HTS)
1449 Airport Road, Huntington, WV 25704

Lodging

Athens:

- Holiday Inn Express
555 East State Street, Athens, OH 45701
(740) 592-4640
- Hampton Inn
986 East State Street, Athens, OH 45701
(740) 593-5600
- Fairfield Inn
924 East State Street, Athens, OH 45701
(740) 589-5839

Marietta:

- Holiday Inn Express
970 Pike Street, Marietta, OH 45750
(740) 760-1515
- Hampton Inn
508 Pike Street, Marietta, OH 45750
(740) 373-5353
- Fairfield Inn
200 Cherry Tree Ln., Marietta, OH 45750
(740) 374-3000

Parkersburg, WV:

- Holiday Inn Express
10057 Emerson Ave., Parkersburg, WV 26104
(304) 916-7380
- Hampton Inn
920 Emerson Ave., Parkersburg, WV 26104
(304) 428-0555
- Comfort Inn
401 37th Street, Parkersburg, WV 26101
(304) 424-5300

Ironton:

- TownePlace Suites by Marriott
802 Washington Street, Ironton, OH 45638
740-237-4862
- Holiday Inn Express
401 South 9th Street, Ironton, OH 45638
(740) 442-7521
- Delta Hotels by Marriott
1441 Winchester Ave, Ashland, KY 41101
606-327-1100
- Hampton Inn
1321 Cannonsburg Rd., Ashland, KY 41102
(606) 928-2888
- Fairfield Inn
10945 US-60, Ashland, KY 41102
(606) 928-1222
- Holiday Inn
711 2nd Street, Portsmouth, OH 45662

The hotels listed are only the three common hotels that are normally used, however there are other options in each area.

There is a variety of restaurants in each area from fast food to sit down, ask the locals for the best eats in town.

Services and Supplies

The Wayne National Forest Fire Management Program maintains many GPC holders who can help you acquire needed supplies that we may not maintain in a cache

Cardholders include:

Jeremy Waite, CH-2 SO
Jason Bew, BC-11, Nelsonville
Scottie Kiser, BC-31, Pedro
Matt Castells, Wayne 611 Assistant, Nelsonville
James Benson, Wayne 611 Lead, Nelsonville
Jason Simms, Wayne 631 Captain, Pedro
Cody Cellentani, Wayne 632 Assistant, Pedro

All Ranger Districts are located near full-service communities, and most needs can be filled locally. Occasionally items may need to be ordered online with a few days' wait for delivery.

Notes: