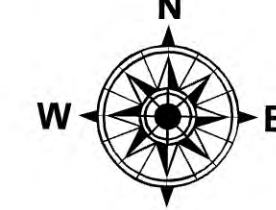
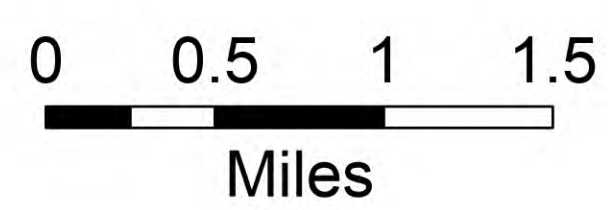


Transportation

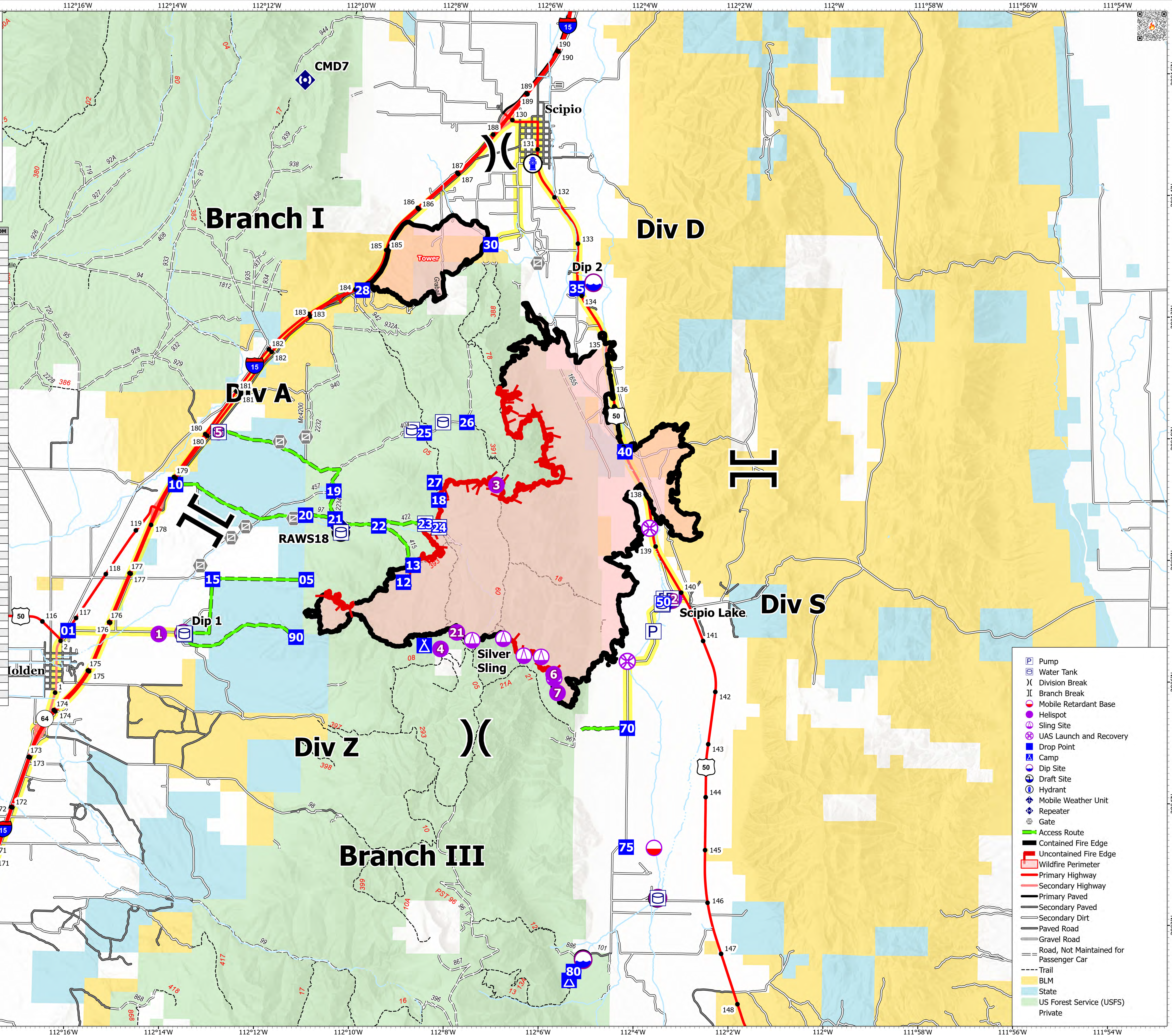
Wild Goose
UT-FIF-260220
7/8/2026

12,665 acres at 7/7/2026 @ 2301



1:36,000 | GB CIMT 7 | 7/8/2026 0129
Acres from IR and GPS
North American 1983 Datum. Lat/Long Grid

Feature Category	Label	Latitude WGS84 DDM	Longitude WGS84 DDM
Camp		39° 00.991' N	112° 05.357' W
Camp		39° 06.466' N	112° 08.498' W
Dip Site		39° 01.332' N	112° 05.067' W
Dip Site	Dip 1	39° 02.359' N	112° 03.506' W
Dip Site	Dip 2	39° 06.617' N	112° 13.586' W
Dip Site		39° 12.463' N	112° 05.018' W
Dip Site	Scipio Lake	39° 07.271' N	112° 03.282' W
Draft Site		39° 01.350' N	112° 05.070' W
Draft Site		39° 02.353' N	112° 03.521' W
Draft Site		39° 08.303' N	112° 10.292' W
Drop Point	01	39° 06.634' N	112° 16.021' W
Drop Point	05	39° 07.523' N	112° 11.008' W
Drop Point	10	39° 09.058' N	112° 13.795' W
Drop Point	12	39° 07.502' N	112° 08.955' W
Drop Point	13	39° 07.782' N	112° 08.757' W
Drop Point	15	39° 07.508' N	112° 12.989' W
Drop Point	18	39° 08.858' N	112° 08.230' W
Drop Point	19	39° 08.984' N	112° 10.452' W
Drop Point	20	39° 08.581' N	112° 11.041' W
Drop Point	21	39° 08.525' N	112° 10.418' W
Drop Point	22	39° 08.420' N	112° 09.494' W
Drop Point	23	39° 08.463' N	112° 08.511' W
Drop Point	24	39° 08.409' N	112° 08.216' W
Drop Point	25	39° 09.959' N	112° 08.555' W
Drop Point	26	39° 10.141' N	112° 07.658' W
Drop Point	27	39° 09.148' N	112° 08.324' W
Drop Point	28	39° 12.294' N	112° 09.904' W
Drop Point	30	39° 13.070' N	112° 07.203' W
Drop Point	35	39° 12.365' N	112° 05.366' W
Drop Point	40	39° 06.690' N	112° 04.313' W
Drop Point	50	39° 07.234' N	112° 03.462' W
Drop Point	70	39° 05.146' N	112° 04.194' W
Drop Point	75	39° 03.193' N	112° 04.189' W
Drop Point	80	39° 01.138' N	112° 05.268' W
Drop Point	90	39° 06.577' N	112° 11.210' W
Gate		39° 12.776' N	112° 06.202' W
Gate		39° 09.870' N	112° 11.058' W
Gate		39° 07.733' N	112° 13.249' W
Gate		39° 08.526' N	112° 11.295' W
Gate		39° 09.787' N	112° 11.605' W
Gate		39° 08.198' N	112° 12.607' W
Gate		39° 08.382' N	112° 12.302' W
Helispot	1	39° 06.599' N	112° 14.106' W
Helispot	2	39° 07.284' N	112° 03.243' W
Helispot	21	39° 06.689' N	112° 07.815' W
Helispot	3	39° 09.119' N	112° 07.018' W
Helispot	4	39° 06.415' N	112° 08.156' W
Helispot	5	39° 09.930' N	112° 12.902' W
Helispot	6	39° 06.022' N	112° 05.762' W
Helispot	7	39° 05.713' N	112° 05.676' W
Hydrant		39° 14.409' N	112° 06.333' W
Mobile Retardant Base		39° 03.185' N	112° 03.602' W
Mobile Weather Unit	RAWS18	39° 08.384' N	112° 10.299' W
Repeater	CMD7	39° 15.738' N	112° 11.170' W
Sling Site		39° 06.304' N	112° 06.028' W
Sling Site		39° 05.952' N	112° 05.750' W
Sling Site		39° 06.320' N	112° 06.395' W
Sling Site		39° 06.593' N	112° 06.832' W
Sling Site	Silver Sling	39° 06.562' N	112° 07.488' W
UAS Launch and Recovery		39° 06.249' N	112° 04.211' W
UAS Launch and Recovery		39° 08.438' N	112° 03.771' W



- Pump
- Water Tank
- Division Break
- Branch Break
- Mobile Retardant Base
- Helispot
- Sling Site
- UAS Launch and Recovery
- Drop Point
- Camp
- Dip Site
- Draft Site
- Hydrant
- Mobile Weather Unit
- Repeater
- Gate
- Access Route
- Contained Fire Edge
- Uncontained Fire Edge
- Wildfire Perimeter
- Primary Highway
- Secondary Highway
- Primary Paved
- Secondary Paved
- Secondary Dirt
- Paved Road
- Gravel Road
- Road, Not Maintained for Passenger Car
- Trail
- BLM
- State
- US Forest Service (USFS)
- Private

