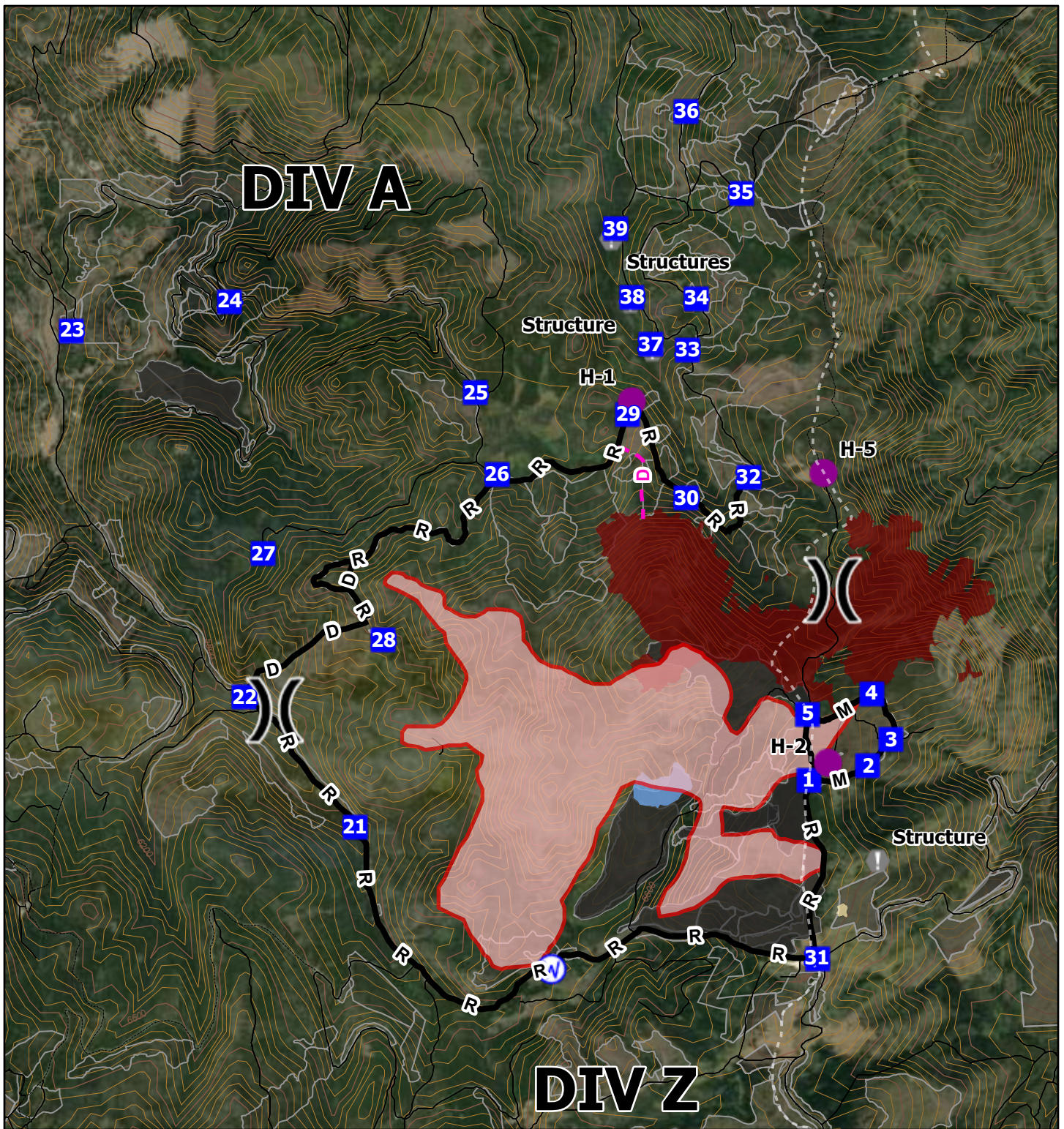
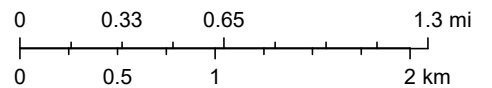
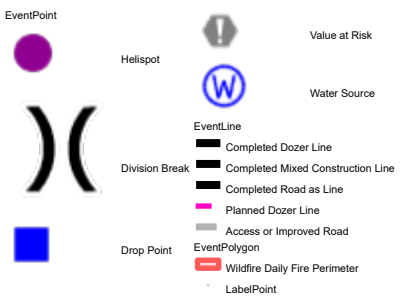


Jericho Creek



5/19/2026

1:56,199



Sources: Esri, TomTom, Garmin, FAO, NOAA, USGS, (c) OpenStreetMap contributors, and the GIS User Community, USDA Forest Service, Northern Region Geospatial Group, U.S. Forest Service, Geospatial Technology and Applications Center (GTAC), US Forest Service, Source: Esri, Vantor, Earthstar Geographics, and the GIS User Community