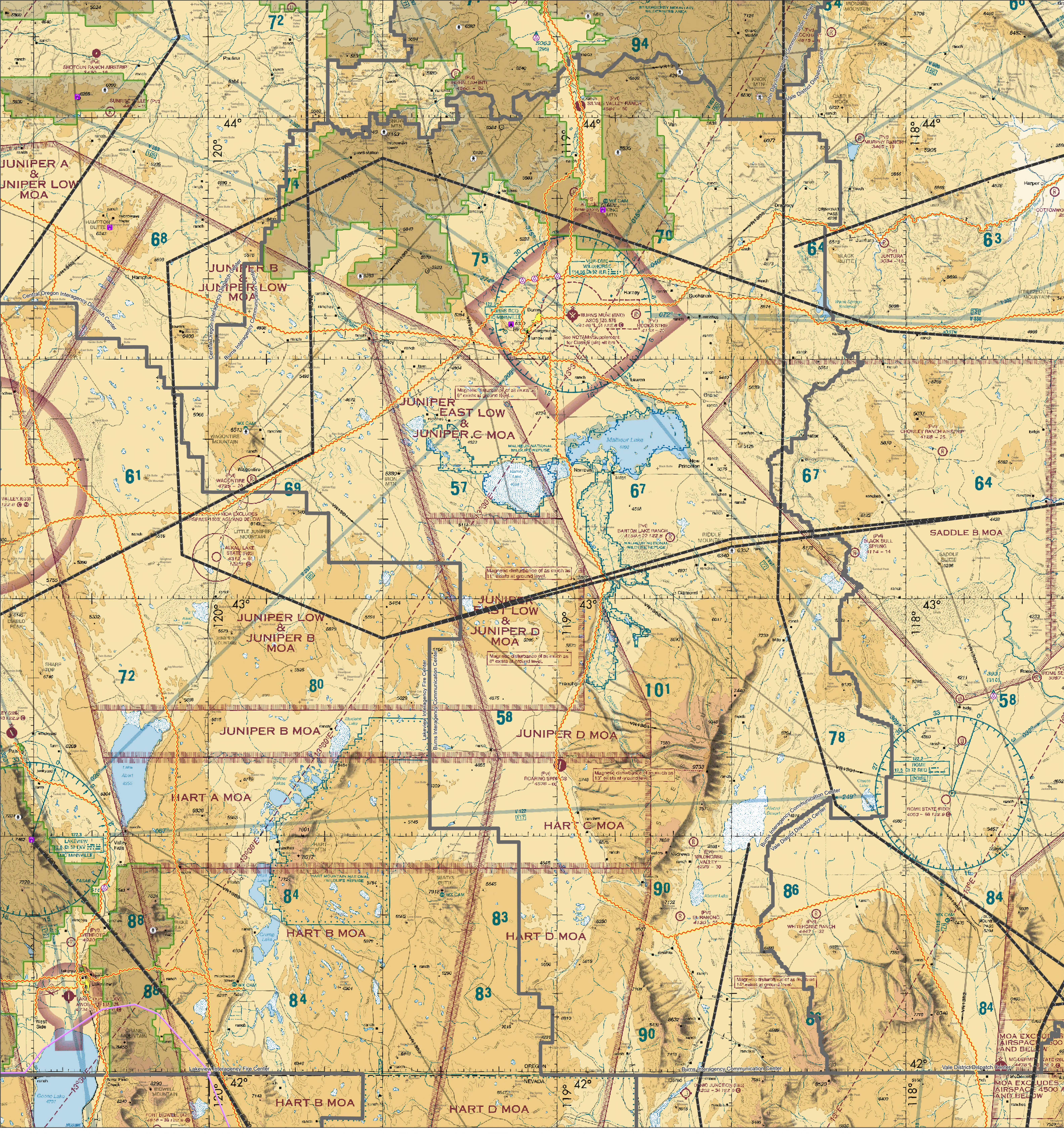
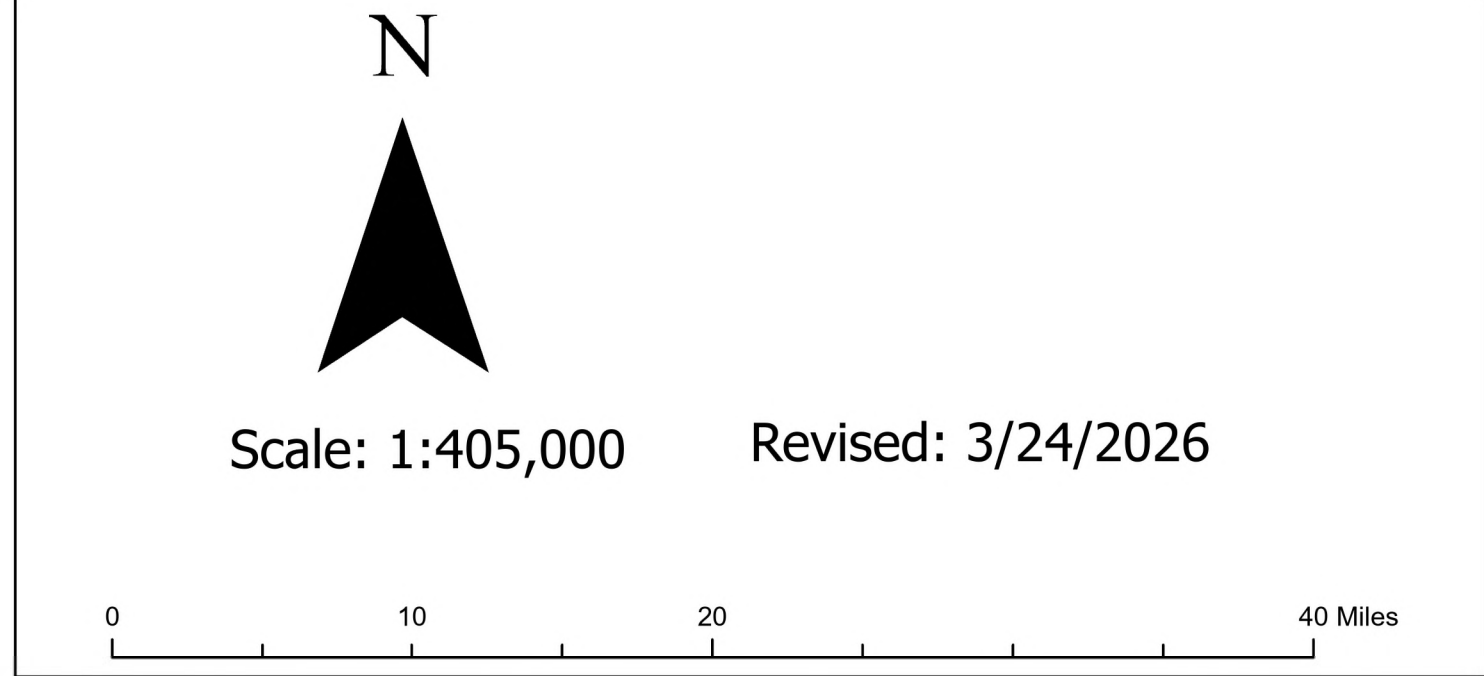


Known Aviation Hazards

Burns Interagency Communication Center



<p>AIRPORTS</p> <p>(Airports having Control Towers are shown in Blue, all others Magenta)</p> <ul style="list-style-type: none"> Control Tower Other than hard-surfaced runways Hard-surfaced runways 1500 ft. to 8000 ft. in length Open or white hard-surfaced runway configuration indicates approximate VOR, VOR/DME, or VORTAC location. <p>All recognizable hard-surfaced runways, including those closed, are shown by visual identification. Airports may be public or private.</p> <p>TOPOGRAPHIC INFORMATION</p> <ul style="list-style-type: none"> Power Transmission Line Aerial Cable Lookout Tower Mountain Peak Mountain Pass 	<p>ADDITIONAL AIRPORT INFORMATION</p> <ul style="list-style-type: none"> Private (PVT) - Non-public use having emergency or landmark value Military - Other than hard-surfaced, all military airports are identified by abbreviations AFB, NAS, AAF, etc. DoD users, for complete airport information consult DOD FLIP. Unimproved Abandoned - paved having landmark value, 3000 ft. or greater Unlighted Lighted Rotating beacon being operated Sunrises to Sunsets 	<p>AIRPORT TRAFFIC SERVICE AND AIRSPACE INFORMATION</p> <p>Only the controlled and reserved airspace effective below 18,000 ft. MSL are shown on this chart. All times are local.</p> <ul style="list-style-type: none"> Class B Airspace Class C Airspace (Mode C - see FAR 91.215(AAM)) Class D Airspace Class E Airspace Class E (40) Airspace Class E Airspace with floor 700 ft. above surface Class E Airspace with floor 1200 ft. or greater above surface that abuts Class C Airspace <p>2400 MSL Differentiates floors of Class E Airspace greater than 700 ft. above surface.</p> <p>4500 MSL Class E Airspace exists at 1200' AGL, unless otherwise designated as shown above.</p> <p>Class E Airspace low altitude Federal Airways are indicated by center line.</p> <p>Class E Airspace low altitude Federal Airways facilities which establish intersection.</p> <p>Class E Airspace low altitude RNAV Routes are indicated by center line.</p> <p>1310 TX 313 RNAV (TIS) RWY 01</p>	<p>MISCELLANEOUS</p> <ul style="list-style-type: none"> Practice Smokejumper Area Ultralight Hang Glider Unmanned Aircraft Activity Parachute Jumping Area (See Airport/Facility Directory) Marine Light VPXYZ VFR Waypoints (See Airport/Facility Directory for latitude/longitude) Falcon Avoidance Area (1000 ft. vertical separation) Prohibited, Restricted, and Warning Areas Classified Airway, Danger, and Restricted Areas Military Operations Area Special Airport Traffic Area (See FAR 91 for details) ADIZ - Air Defense Identification Zone (See FAR 92.215(AAM)) National Security Area Terminal Radar Service Area (TRSA) MTR - Military Training Route 	<p>LOCALLY IDENTIFIED VERTICAL OBSTRUCTIONS</p> <p>(Towers, lookouts and repeaters of unknown height shown in Black, Towers, lookouts and repeaters < 2000 AGL, shown in Gray, All others shown in Red)</p> <ul style="list-style-type: none"> Tower Lookout Repeater Overhead Cables Blasting Area Radio Base Site Radio Avionics Site Radio Secondary Base Sites Bridges Main Power Lines Wire Hazards Aerial Recreation Areas Retardant Jetson Areas Hang Glider Sites Glider Operation Area Ballooning/Paraglider Sites Rocket Launch Sites <p>Military Training Routes</p> <ul style="list-style-type: none"> Visual Route Leg Identifier Instrument Route Outer Boundary Instrument Route Leg Identifier Instrument Route Outer Boundary Slow Route Leg Identifier Slow Route Outer Boundary Slow Route Line 	<p>NATIONAL WIND FACILITY HAZARDS (FAA)</p> <ul style="list-style-type: none"> Met Towers < 200 ft AGL Cellular Towers Windmills of Unknown Height Windmills < 200 ft AGL Windmills > 200 ft AGL Wind Farm < 2000 AGL Wind Farm > 2000 AGL <p>ADMINISTRATIVE FEATURES</p> <ul style="list-style-type: none"> Guard Stations Dispatch Areas Aerial Refuel Routes AR305AV, AR305BV 	<ul style="list-style-type: none"> Mountain Peaks Fire Lookouts Cellular Towers Verticle Obstruction Hazard Above 2000' AGL Repeater Sites Military Training Route Natural Gas Pipeline Transmission Line Forest Administrative Boundaries <p>The USDA Forest Service makes no warranty as to the accuracy, reliability or completeness of these data for individual or aggregate use with other data. Original data were compiled from various sources. This information may not meet National Map Accuracy Standards. This product was developed through digital means and may be updated without notification.</p>
---	--	--	--	---	--	--