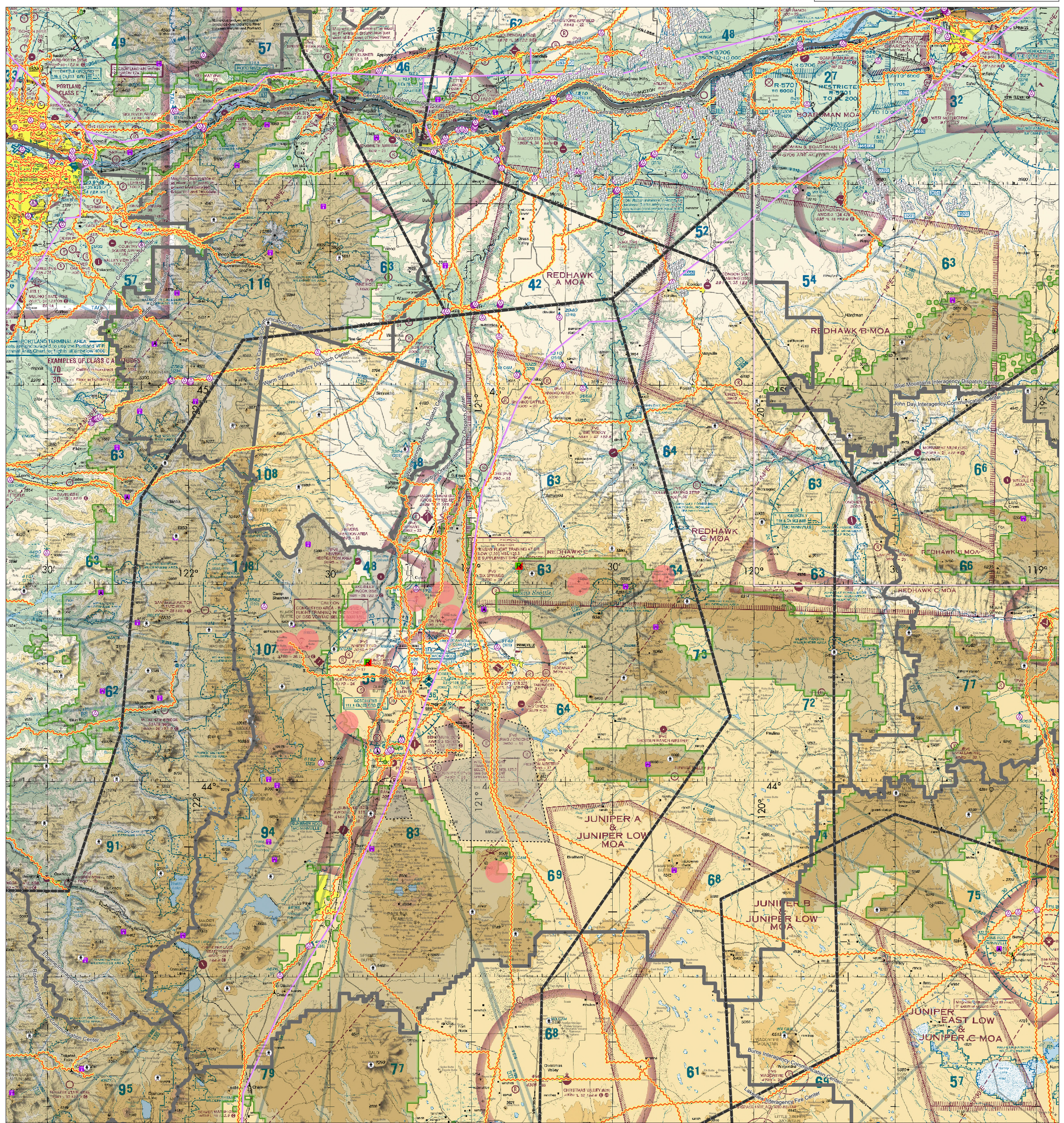
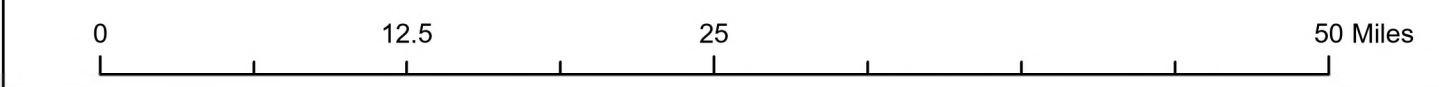


Known Aviation Hazards

Central Oregon Interagency Dispatch Center

Scale: 1:495,000 Revised: 3/24/2026



AIRPORTS (Airports having Control Towers are shown in Blue, all others Magenta) Other than hard-surfaced runways Hard-surfaced runways 1500 ft. to 8069 ft. in length Open air within hard-surfaced runway configuration indicates approximate VOR, VOR-DME, or VORTAC location All recognizable hard-surfaced runways, including those closed, are shown for visual identification. Airports may be public or private.	ADDITIONAL AIRPORT INFORMATION Private (P) - Non-public use having emergency or landmark value Military - Other than hard-surfaced, all military airports are identified by abbreviations AFB, NAS, AAF, etc. DoD users, for complete airport information consult DoD FLIP. Unlighted Unlighted - paved having landmark value, 3000 ft. or greater Unlighted - unpaved Unlighted - Flight Park Unlighted - Selected Rotating beacon being operation Sunset to Sunrise	AIRPORT TRAFFIC SERVICE AND AIRSPACE INFORMATION Only the controlled and reserved airspace effective below 18,000 ft. MSL are shown on this chart. All times are local. Class B Airspace Class C Airspace (Mode C - see FAR 91.215(AAM)) Class D Airspace Class E Airspace Class E Airspace with floor 700 ft. above surface Class E Airspace with floor 1200 ft. or greater above surface that abuts Class C Airspace Differential floors of Class E Airspace greater than 700 ft. above surface, otherwise designated as shown above. Class E Airspace low altitude Federal Airways are indicated by center line. Intersection - arrows are directed towards facilities which establish intersection. Total mileage between NAVAIDs on direct Airways are indicated by center line. Class E Airspace low altitude RNAV Routes are indicated by center line. 1319 TX 313 McCluskey Dona	MISCELLANEOUS Practice Smokejumper Area Ultralight Activity Hang Glider Activity Unmanned Aircraft Activity Parachute Jumping Area (See Airport Facility Directory) Marine Light VPXYZ VFR Waypoints (See Airport Facility Directory for latitude/longitude) Falcon Avoidance Area (1000 ft. vertical separation) Prohibited, Restricted, and Warning Areas Classified Airway, Danger, and Restricted Areas Military Operations Area Special Airport Traffic Area (See FAR 91 for details) ADIZ - Air Defense Identification Zone (Mode C - See FAR 92.215(AAM)) National Security Area Terminal Radar Service Area (TRSA) MTR - Military Training Route	LOCALLY IDENTIFIED VERTICAL OBSTRUCTIONS (Towers, lookouts and repeaters of unknown height shown in Black; Towers, lookouts and repeaters < 2000 AGL, shown in gray; All others shown in Red) Tower Lookout Repeater Overhead Cables Blowing Area Radio Base Site Radio Aviation Site Radio Secondary Base Sites Bridges Wire Hazards Aerial Recreation Areas Retardant Jetson Areas Hang Glider Sites Glider Operation Area Ballooning/Paraglider Sites Rocket Launch Sites Military Training Routes Visual Route Log Identifier Visual Route Outer Boundary Instrument Route Log Identifier Instrument Route Outer Boundary Slow Route Log Identifier Slow Route Outer Boundary Slow Route Line	NATIONAL WIND FACILITY HAZARDS (FAA) Met Towers < 200 ft AGL Met Towers > 200 ft AGL Windmills of Unknown Height Windmills < 200 ft AGL Windmills > 200 ft AGL Wind Farm > 2000 AGL Wind Farm > 2000 AGL Mountain Peaks Fire Lookouts Wind Turbines Cellular Towers Verticle Obstruction Hazard Above 200ft AGL Repeater Sites Retardant Jetson Site Military Training Route (Includes refueling routes) Practice Smokejumper Area Natural Gas Pipeline Transmission Line UAS Flight Restriction Area Pentagon UAS Training Area Leading Edge Aviation Training Area Forest Administrative Boundaries	ADMINISTRATIVE FEATURES Guard Stations Dispatch Areas Aerial Refuel Routes AR305AV, AR305BV
---	--	--	--	---	--	--

The USDA Forest Service makes no warranty as to the accuracy, reliability or completeness of these data for individual or aggregate use with other data. Original data were compiled from various sources. This information may not meet National Map Accuracy Standards. This product was developed through digital means and may be updated without notification.