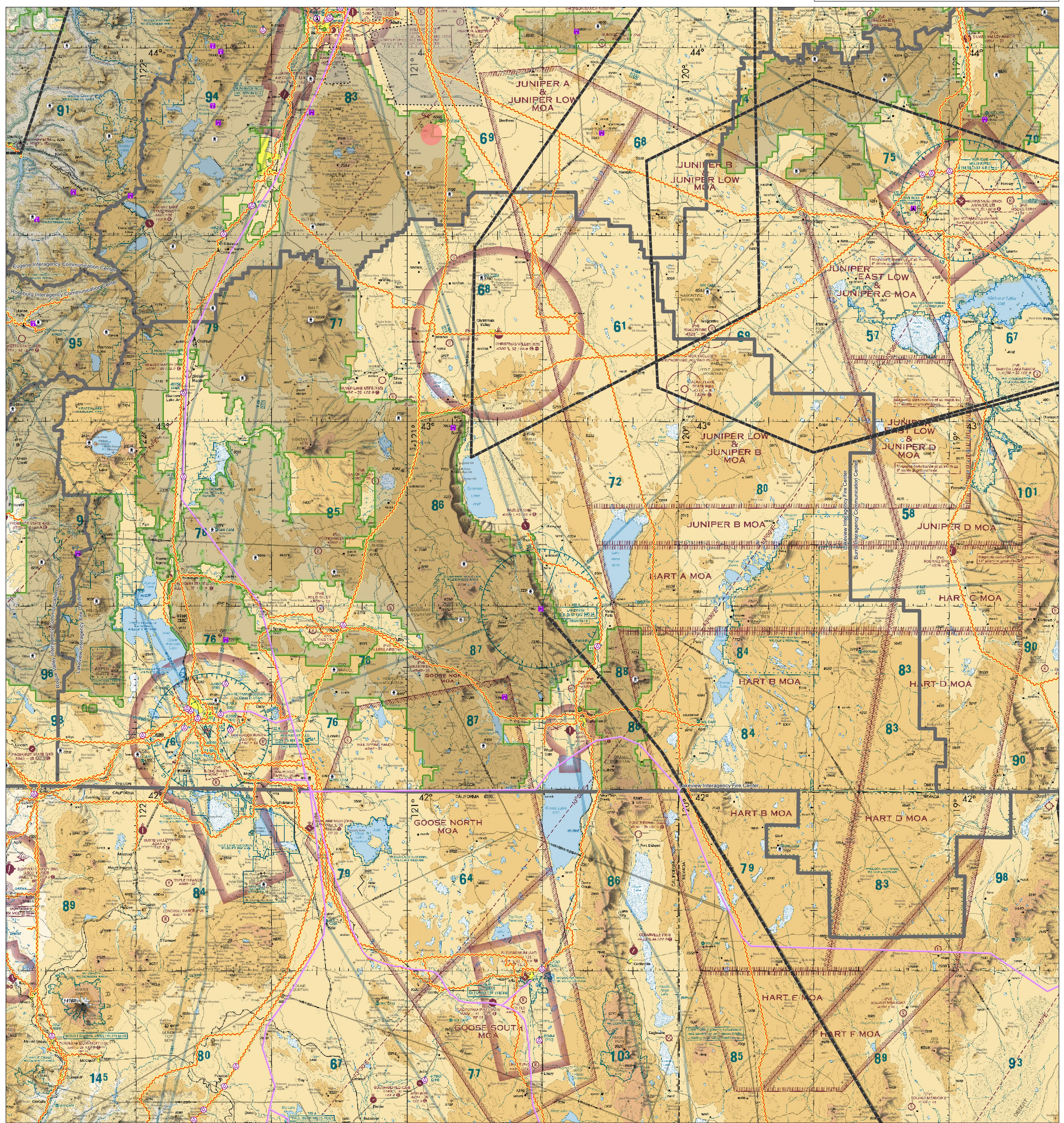
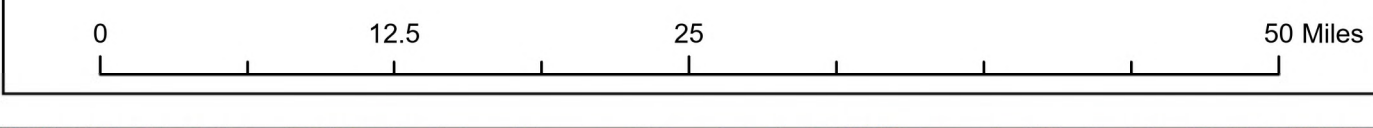


# Known Aviation Hazards

## Lakeview Interagency Fire Center

Scale: 1:516,000 Revised: 3/24/2026



<b>AIRPORTS</b> (Airports having Control Towers are shown in Blue, all others Magenta) Other than hard-surfaced runways Hard-surfaced runways 1500 ft. to 8000 ft. in length Open dirt or other hard-surfaced runways VOR/DME, or VORTAC location All recognizable hard-surfaced runways, including those closed, are shown by visual identification. Airports may be public or private.	<b>ADDITIONAL AIRPORT INFORMATION</b> Private (TPP) - Non-public use having emergency or landmark value Military - Other than hard-surfaced; all military airports are identified by abbreviations AFB, NAS, AAF, etc. DoD users, for complete airport information consult DOD FLIP. Unimproved Abandoned - paved having landmark value, 3000 ft. or greater Unlighted Flight Path Selected	<b>AIRPORT TRAFFIC SERVICE AND AIRSPACE INFORMATION</b> Only the controlled and reserved airspace effective below 18,000 ft. MSL are shown on this chart. All times are local. Class B Airspace Class C Airspace (Mode C - see FAR 91.215(AIM)) Class D Airspace Class E Airspace Class E (4d) Airspace Class E Airspace with floor 700 ft. above surface Class E Airspace with floor 1200 ft. or greater above surface that abuts Class C Airspace 2400 MSL 4500 MSL Differential floors of Class E Airspace greater than 700 ft. above surface. Class E Airspace exists at 1200' AGL unless otherwise designated as shown above. Class E Airspace low altitude RNAV Routes are indicated by center line. Intersection - arrows are directed towards facilities which establish intersection. Total mileage between NAVAIDs on direct Airways Class E Airspace low altitude RNAV Routes are indicated by center line. 1319 TX 313 MacCoy Creek RNAV Waypoint	<b>MISCELLANEOUS</b> Practice Smokejumper Area Ultralight Activity Hang Glider Activity Unmanned Aircraft Activity Parachute Jumping Area (See Airport/Facility Directory) Marine Light VPXYZ NAME (VPXYZ) VFR Waypoints (See Airport/Facility Directory for latitude/longitude) Falcon Avoidance Area (1000 ft. vertical separation)	<b>LOCALLY IDENTIFIED VERTICAL OBSTRUCTIONS</b> (Towers, lookouts and repeaters of unknown height shown in Black; Towers, lookouts and repeaters < 200ft AGL, shown in Gray; All others shown in Red) Tower Lookout Repeater Overhead Cables Blasting Area Radio Base Site Radio Avionics Site Radio Secondary Base Sites Bridges Main Power Lines Wire Hazards Aerial Recreation Areas Retardant Jetson Areas Hang Glider Sites Glider Operation Area Ballooning/Paraglider Sites Rocket Launch Sites Military Training Routes Visual Route Log Identifier Visual Route Outer Boundary Instrument Route Log Identifier Instrument Route Outer Boundary Slow Route Log Identifier Slow Route Outer Boundary Slow Route Line	<b>NATIONAL WIND FACILITY HAZARDS (FAA)</b> Met Towers < 200 ft AGL Met Towers > 200 ft AGL Windmills of Unknown Height Windmills < 200 ft AGL Windmills > 200 ft AGL Wind Farm < 200ft AGL Wind Farm > 200ft AGL Mountain Peaks Fire Lookouts Cellular Towers Verticle Obstruction Repeater Sites Military Training Route Practice Smokejumper Area Leading Edge Aviation Training Area Forest Administrative Boundaries UAS Flight Restriction Practice Smokejumper Area Leading Edge Aviation Training Area Forest Administrative Boundaries	<b>ADMINISTRATIVE FEATURES</b> Guard Stations Dispatch Areas Aerial Refuel Routes AR305AV, AR305BV
--	--	---	---	---	---	--

The USDA Forest Service makes no warranty as to the accuracy, reliability or completeness of these data for individual or aggregate use with other data. Original data were compiled from various sources. This information may not meet National Map Accuracy Standards. This product was developed through digital means and may be updated without notification.