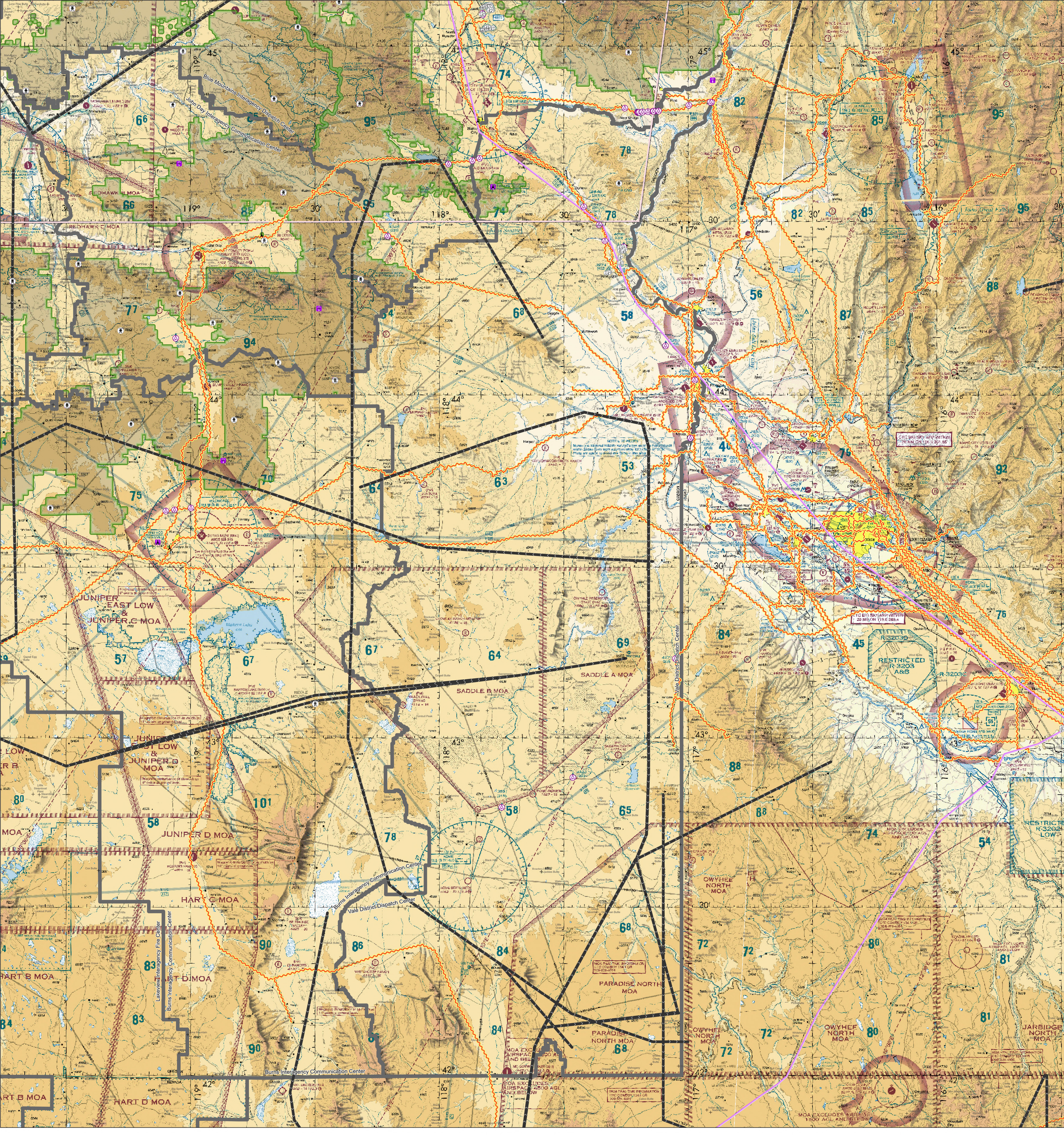


Known Aviation Hazards

Vale District Dispatch Center

N
Scale: 1:568,000 Revised: 3/24/2026
0 12.5 25 50 Miles



AIRPORTS (Airports having Control Towers are shown in Blue, all others Magenta) Other than hard-surfaced runways Hard-surfaced runways 1500 ft. to 8069 ft. in length Open air within hard-surfaced runway configuration indicates approximate VOR, VOR-DME, or VORTAC location All recognizable hard-surfaced runways, including those closed, are shown for visual identification. Airports may be public or private.	ADDITIONAL AIRPORT INFORMATION Private (P) - Non-public use having emergency or landmark value Military - Other than hard-surfaced, all military airports are identified by abbreviations AFB, NAS, AAF, etc. DoD users, for complete airport information consult DOD FLIP. Heliport Selected Unidentified Abandoned - paved having landmark value, 3000 ft. or greater Unlighted Flight Path Selected	AIRPORT TRAFFIC SERVICE AND AIRSPACE INFORMATION Only the controlled and reserved airspace effective below 18,000 ft. MSL are shown on this chart. All times are local. 2400 MSL Differentiates floors of Class E Airspace greater than 700 ft. above surface. 4500 MSL Class E Airspace in hundreds of feet (A minus ceiling value indicates surface up to but not including that value). Class E Airspace low altitude Federal Airways are indicated by center line. Class E Airspace low altitude RNAV Routes are indicated by center line. Total mileage between NAVaids on direct Airways Class E Airspace low altitude RNAV Routes are indicated by center line.	MISCELLANEOUS Prohibited, Restricted, and Warning Areas; Danger, and Restricted Areas Military Operations Area Special Airport Traffic Area ADIZ - Air Defense Identification Zone Class C (old) Airspace Class E Airspace with floor 700 ft. above surface Class E Airspace with floor 1200 ft. or greater above surface that abuts Class C Airspace Parachute Jumping Area Marine Light VPXYZ VFR Waypoints Falcon Avoidance Area Aerial Recreation Areas	LOCALLY IDENTIFIED VERTICAL OBSTRUCTIONS (Towers, lookouts and repeaters of unknown height shown in Black; Towers, lookouts and repeaters < 200ft AGL, shown in Gray; All others shown in Red) Tower Lookout Repeater Overhead Cables Blasting Area Radio Base Site Radio Avionics Site Radio Secondary Base Sites Bridges Main Power Lines Wire Hazards Aerial Recreation Areas	NATIONAL WIND FACILITY HAZARDS (FAA) Met Towers < 200 ft AGL Met Towers > 200 ft AGL Windmills of Unknown Height Windmills < 200 ft AGL Windmills > 200 ft AGL Wind Farm < 200ft AGL Wind Farm > 200ft AGL	Military Training Routes Visual Route Leg Identifier Instrument Route Leg Identifier Instrument Route Outer Boundary Slow Route Leg Identifier Slow Route Outer Boundary Slow Route Line	ADMINISTRATIVE FEATURES Guard Stations Dispatch Areas Aerial Refuel Routes AR305AV, AR305BV	Other Features Mountain Peaks Fire Lookouts Wind Turbines Cellular Towers Verticle Obstruction Hazard Above 200ft AGL Repeater Sites Military Training Route (includes refueling routes) Natural Gas Pipeline Transmission Line UAS Flight Restriction Area Pendleton UAS Training Area Forest Administrative Boundaries
---	--	--	---	--	--	---	--	---

The USDA Forest Service makes no warranty as to the accuracy, reliability or completeness of these data for individual or aggregate use with other data. Original data were compiled from various sources. This information may not meet National Map Accuracy Standards. This product was developed through digital means and may be updated without notification.