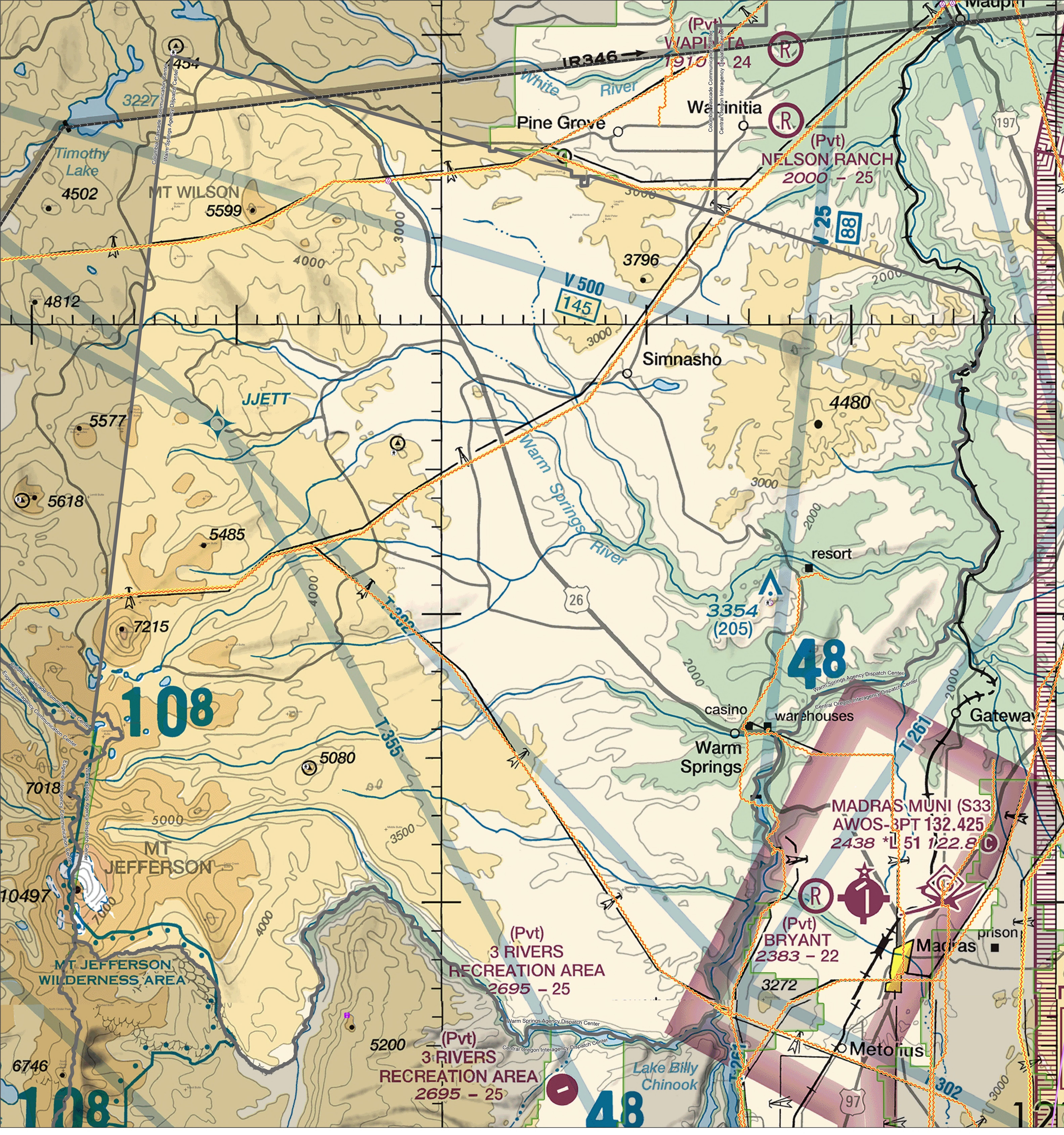
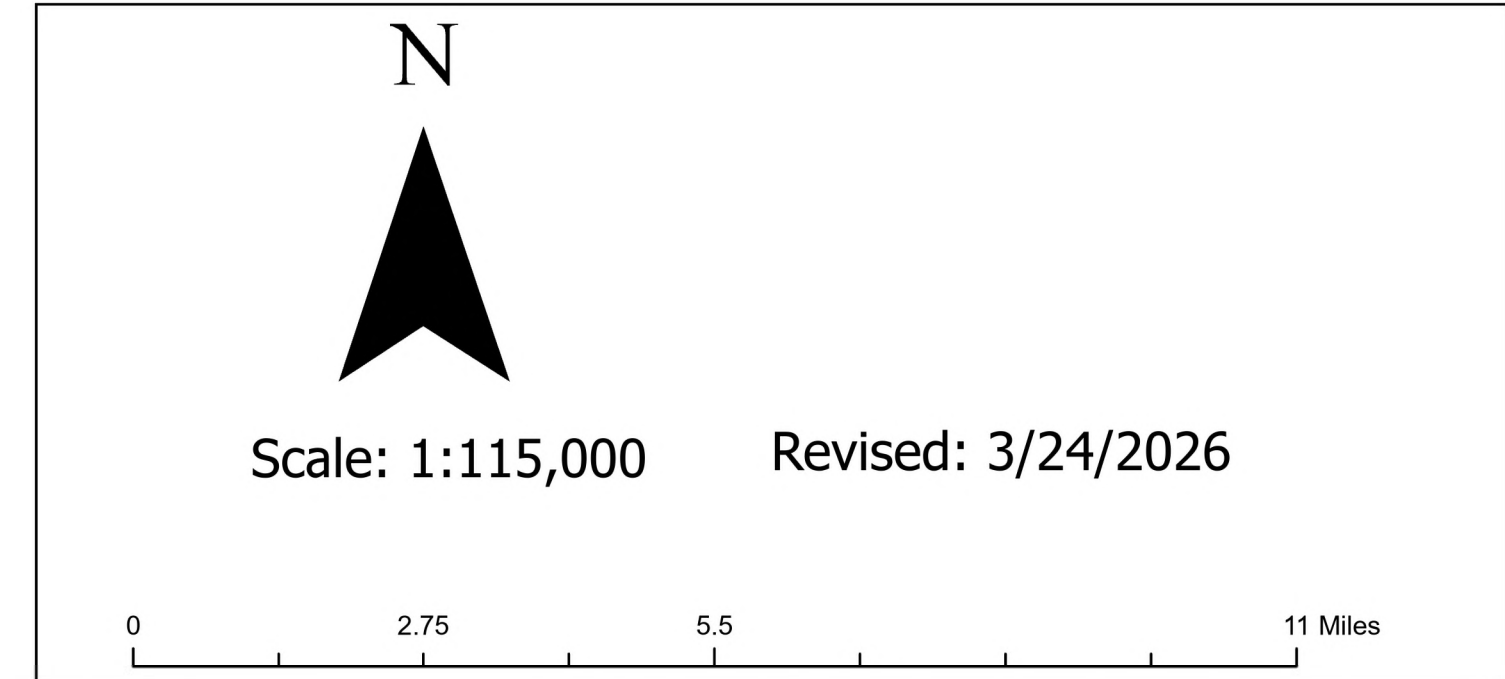


Known Aviation Hazards

Warm Springs Agency Dispatch Center



AIRPORTS (Airports having Control Towers are shown in Blue, all others Magenta) Other than hard-surfaced runways Hard-surfaced runways 1500 ft. to 8069 ft. in length Open dirt within hard-surfaced runway configuration includes approximate VOR, VOR/DME, or VORTAC location. All recognizable hard-surfaced runways, including those closed, are shown for visual identification. Airports may be public or private.	ADDITIONAL AIRPORT INFORMATION Private ("Pvt") - Non-public use having emergency or landmark value Military - Other than hard-surfaced, all military airports are identified by abbreviations AFB, NAS, AAF, etc. DoD users, for complete airport information consult DoD FLP. Abandoned - paved having landmark value, 3000 ft. or greater Unlighted Unimproved Flight Park Selected	AIRPORT TRAFFIC SERVICE AND AIRSPACE INFORMATION Only the controlled and reserved airspace effective below 10,000 ft. MSL are shown on this chart. All times are local. Class B Airspace Class C Airspace (Mode C - see FAR 91.215(AIM)) Class D Airspace Class E Airspace Class E (4d) Airspace Class E Airspace with floor 700 ft. above surface Class E Airspace with floor 1200 ft. or greater above surface that abuts Class C Airspace 2400 MSL 4500 MSL Class E Airspace exists at 1200' AGL, unless otherwise designated as shown above. Class E Airspace low altitude Federal Airways are indicated by center line. Intersection - arrows are directed towards facilities which establish intersection. Total mileage between NAVAIDs on direct Airways Class E Airspace low altitude RNAV Routes are indicated by center line. T-131 TX 313 Helicopter RNAV Weatherport	MISCELLANEOUS Practice Smokejumper Area Ultralight Hang Glider Unmanned Aircraft Cider Operations Parachute Jumping Area (See Airport/Facility Directory) Marine Light VPXYZ NAME (VPXYZ) VFR Waypoints (See Airport/Facility Directory for latitude/longitude) Falcon Avoidance Area (1000 ft. vertical separation)	LOCALLY IDENTIFIED VERTICAL OBSTRUCTIONS (Towers, lookouts and repeaters of unknown height shown in Black; Towers, lookouts and repeaters > 200ft AGL, shown in Gray; All others shown in Red) Tower Lookout Repeater Overhead Cables Blasting Area Radio Base Site Radio Avionics Site Radio Secondary Base Sites Bridges Main Power Lines Wire Hazards Aerial Recreation Areas Retardant Jetson Areas Hang Glider Sites Glider Operation Areas Ballooning/Paraglider Sites Rocket Launch Sites Military Training Routes Visual Route Leg Identifier Visual Route Outer Boundary Instrument Route Leg Identifier Instrument Route Outer Boundary Slow Route Leg Identifier Slow Route Outer Boundary Slow Route Line	NATIONAL WIND FACILITY HAZARDS (FAA) Met Towers < 200 ft AGL Met Towers > 200 ft AGL Windmills of Unknown Height Windmills < 200 ft AGL Windmills > 200 ft AGL Wind Farm > 200ft AGL Wind Farm < 200ft AGL + Mountain Peaks Fire Lookouts Verticle Obstruction Hazard Above 200ft AGL Repeater Sites Military Training Route (includes refueling routes) Natural Gas Pipeline Transmission Line Forest Administrative Boundaries Guard Stations Dispatch Areas Aerial Refuel Routes AR305AV, AR305BV
--	---	---	--	--	--

The USDA Forest Service makes no warranty as to the accuracy, reliability or completeness of these data for individual or aggregate use with other data. Original data were compiled from various sources. This information may not meet National Map Accuracy Standards. This product was developed through digital means and may be updated without notification.