

Tack DXP Timber Sale

Sale Area Map
Three Rivers Ranger District
Colville National Forest

- Contract Area Boundary, B.1
- <all other values>
- RMA DXP Buffer C2.355#
- LOS Virtual DXP Prescription Boundary, C2.355#
- Protect Improvements - Cattle Guard/Gate, C6.22#
- Protect Improvements - Gate (New), C6.22#
- Existing Transportation System, B5.12#
- KO Keep Open, B6.631, C5.12#
- R Hauling Restricted, C5.12#
- U Unsuitable for Hauling Prior to Reconstruction, A.7, B5.2, C5.12#
- RRC Specified Road Reconstruction A.7, B5.2, C5.12#
- > Protect Streamcourse - Fishbearing Stream, B6.5, C6.315#
- > Protect Streamcourse - Non Fishbearing Stream, B6.5, C6.315#
- Protect Improvements - Fence, C6.22#
- - - Protect Improvements, Trail, B6.22
- Protect Survey Monument, B6.23#
- W/S Winter Log/Summer Dry C6.315#
- CTL Cut-To-Length Forwarder C6.41#, C6.42#
- DXP Designation by Prescription, C2.355#
- T Tractor C6.41#, C6.42#
- TE Tether C6.41#, C6.42#
- SSM Steep Slope Machine C6.41#, C6.42#



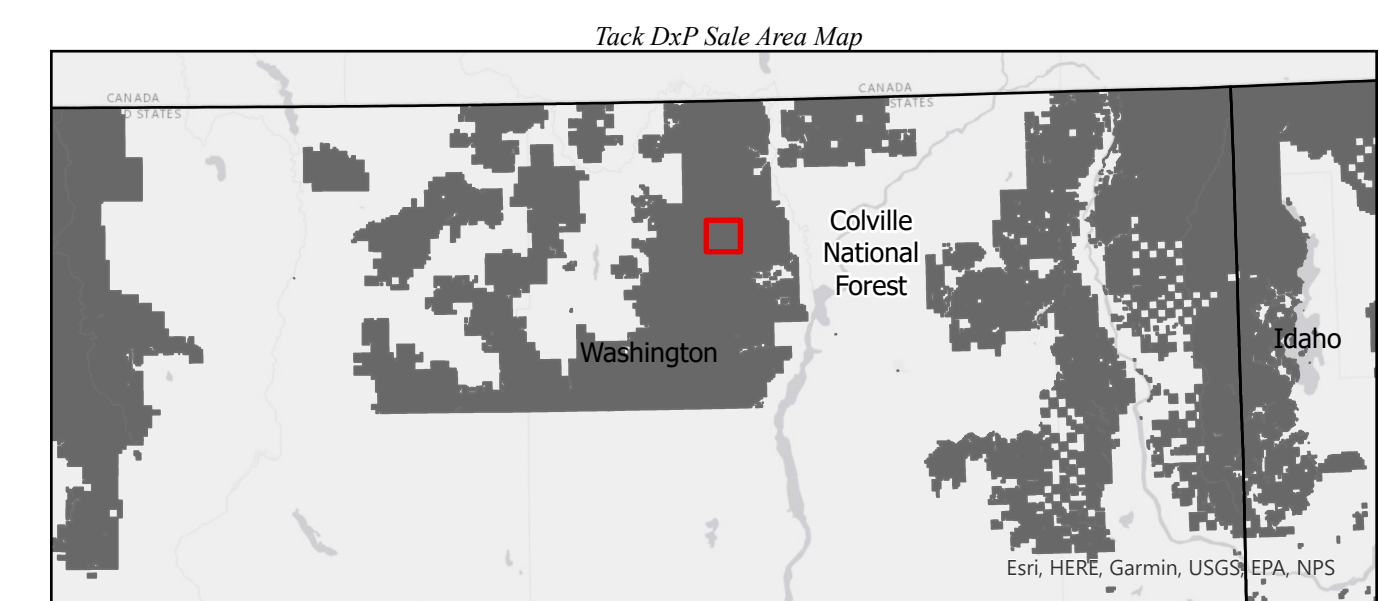
Notes

Industrial Fire Precaution Class Zone is 687, C7.22

Landings, temporary roads, and skid trails are to be scarified to a depth of 8 inches and seeded where designated, C6.6#

Subdivision B.1	Acres	Appraised Logging System	Designation	Winter Log/Summer Dry	RMA Buffer Size
77	121	T	DxP		
78	71	T	DxP	x	150 feet
81	136	T	DxP	x	150 feet
83	49	T	DxP		150 feet
86	67	T	DxP		
87	38	CTL/SSM	DxP		
100	191	T/SSM	DxP		
101	54	T	DxP		
104	14	T	DxP		
832	36	T	DxP		150 feet
837	12	T	DxP		

Road Number	Keep Open (KO)	Project Use Restriction (A)	Hauling Restricted (R)	Unsuitable for Haul Prior to Reconstruction (U)	Specified Road Reconstruction (RRC)	Maintenance Only (M)
6110000 (MP 0.00 to MP 2.85)	X		X			X
6110000 (MP 2.85 to MP 0.00; MP 0.00 to MP 2.75)	X		X	X	X	
6113000	X		X	X	X	
6113290		X	X	X	X	
6113325	X		X	X	X	
6113336		X	X	X	X	
6113338		X	X	X	X	
6113380		X	X	X	X	



Scale: 1:7,000
0 0.17 0.35 0.7 Miles