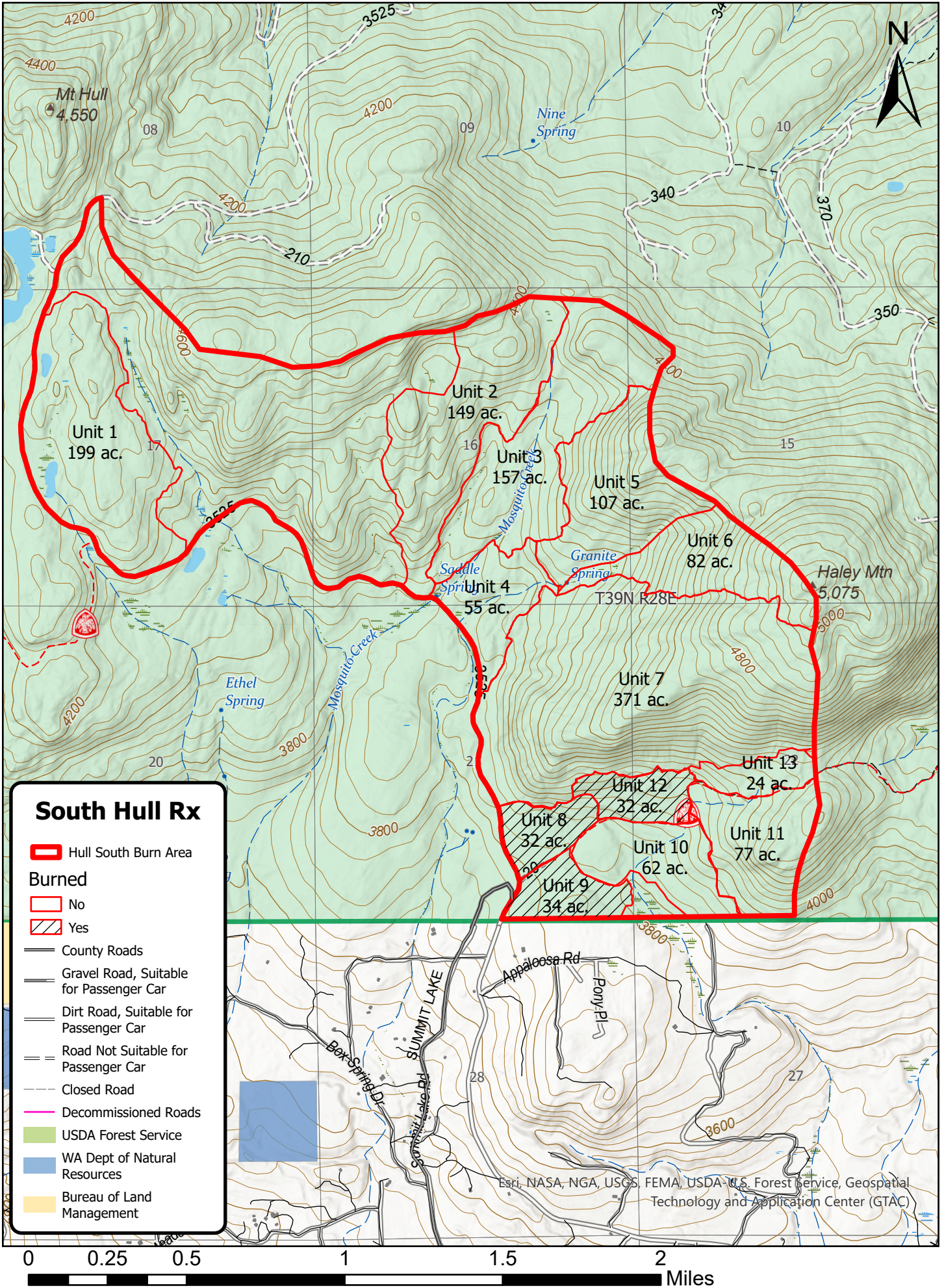


South Hull Rx



South Hull Rx

Hull South Burn Area

Burned

No

Yes

County Roads

Gravel Road, Suitable for Passenger Car

Dirt Road, Suitable for Passenger Car

Road Not Suitable for Passenger Car

Closed Road

Decommissioned Roads

USDA Forest Service

WA Dept of Natural Resources

Bureau of Land Management

Esri, NASA, NGA, USGS, FEMA, USDA-U.S. Forest Service, Geospatial Technology and Application Center (GTAC)

