

# Kings Lake DXP Timber Sale Area Map

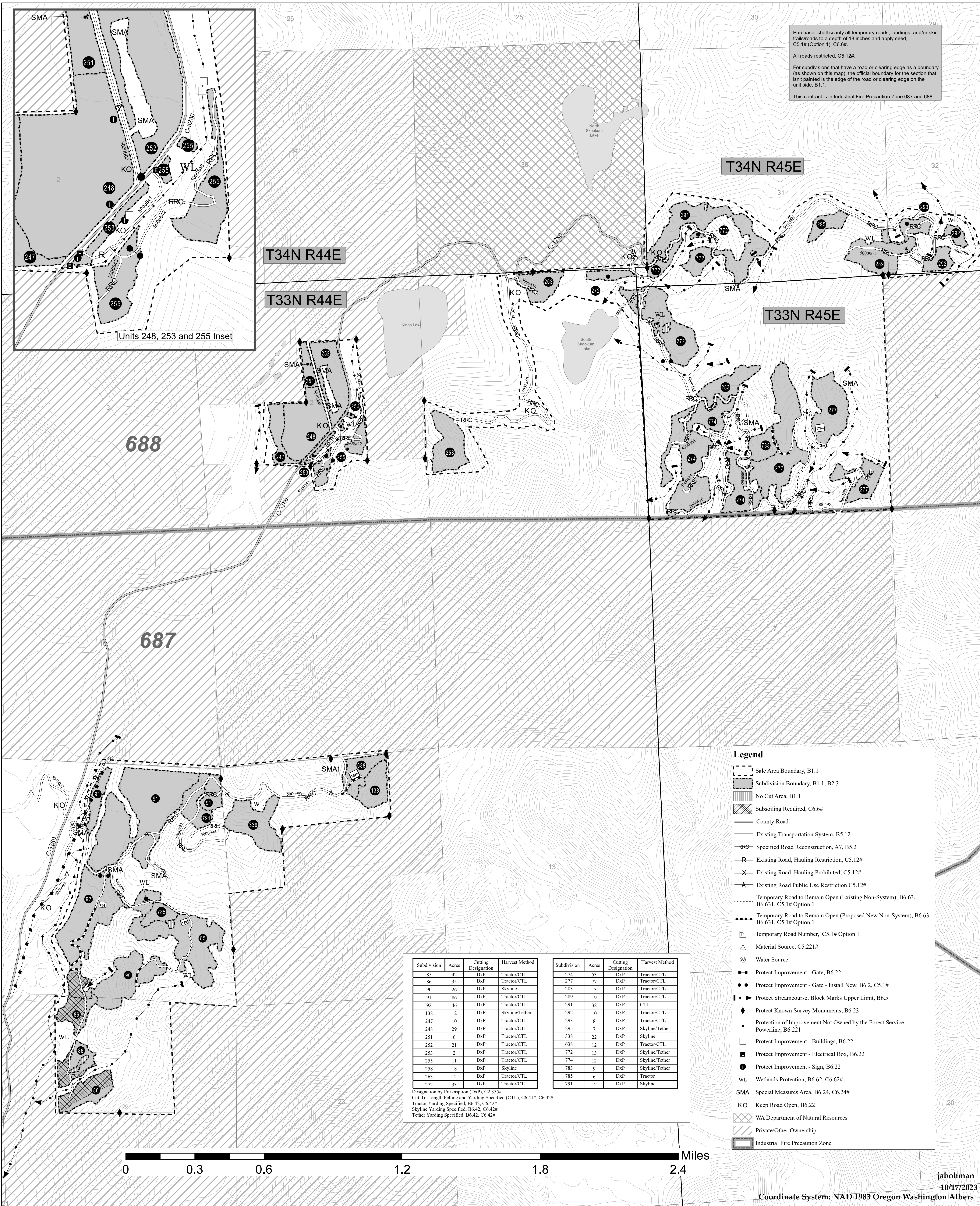
## Newport Ranger District, Colville National Forest

Purchaser shall scarify all temporary roads, landings, and/or skid trails/roads to a depth of 18 inches and apply seed, C5.1# (Option 1), C6.6#.

All roads restricted, C5.12#.

For subdivisions that have a road or clearing edge as a boundary (as shown on this map), the official boundary for the section that isn't painted is the edge of the road or clearing edge on the unit side, B1.1.

This contract is in Industrial Fire Precaution Zone 687 and 688.



688

687

Subdivision	Acres	Cutting Designation	Harvest Method
85	42	DxP	Tractor/CTL
86	35	DxP	Tractor/CTL
90	26	DxP	Skyline
91	86	DxP	Tractor/CTL
92	46	DxP	Tractor/CTL
138	12	DxP	Skyline/Tether
247	10	DxP	Tractor/CTL
248	29	DxP	Tractor/CTL
251	6	DxP	Tractor/CTL
252	21	DxP	Tractor/CTL
253	2	DxP	Tractor/CTL
255	11	DxP	Tractor/CTL
258	18	DxP	Skyline
263	12	DxP	Tractor/CTL
272	33	DxP	Tractor/CTL

Subdivision	Acres	Cutting Designation	Harvest Method
274	53	DxP	Tractor/CTL
277	77	DxP	Tractor/CTL
283	13	DxP	Tractor/CTL
289	19	DxP	Tractor/CTL
291	38	DxP	CTL
292	10	DxP	Tractor/CTL
293	8	DxP	Tractor/CTL
295	7	DxP	Skyline/Tether
338	22	DxP	Skyline
638	12	DxP	Tractor/CTL
772	13	DxP	Skyline/Tether
774	12	DxP	Skyline/Tether
783	9	DxP	Skyline/Tether
785	6	DxP	Tractor
791	12	DxP	Skyline

Designation by Prescription (DxP), C2.355#  
 Cut-To-Length Felling and Yarding Specified (CTL), C6.41#, C6.42#  
 Tractor Yarding Specified, B6.42, C6.42#  
 Skyline Yarding Specified, B6.42, C6.42#  
 Tether Yarding Specified, B6.42, C6.42#

### Legend

- Sale Area Boundary, B1.1
- Subdivision Boundary, B1.1, B2.3
- No Cut Area, B1.1
- Subsoiling Required, C6.6#
- County Road
- Existing Transportation System, B5.12
- Specified Road Reconstruction, A7, B5.2
- Existing Road, Hauling Restriction, C5.12#
- Existing Road, Hauling Prohibited, C5.12#
- Existing Road Public Use Restriction C5.12#
- Temporary Road to Remain Open (Existing Non-System), B6.63, B6.631, C5.1# Option 1
- Temporary Road to Remain Open (Proposed New Non-System), B6.63, B6.631, C5.1# Option 1
- Temporary Road Number, C5.1# Option 1
- Material Source, C5.221#
- Water Source
- Protect Improvement - Gate, B6.22
- Protect Improvement - Gate - Install New, B6.2, C5.1#
- Protect Streamcourse, Block Marks Upper Limit, B6.5
- Protect Known Survey Monuments, B6.23
- Protection of Improvement Not Owned by the Forest Service - Powerline, B6.221
- Protect Improvement - Buildings, B6.22
- Protect Improvement - Electrical Box, B6.22
- Protect Improvement - Sign, B6.22
- Wetlands Protection, B6.62, C6.62#
- SMA Special Measures Area, B6.24, C6.24#
- KO Keep Road Open, B6.22
- WA Department of Natural Resources
- Private/Other Ownership
- Industrial Fire Precaution Zone

