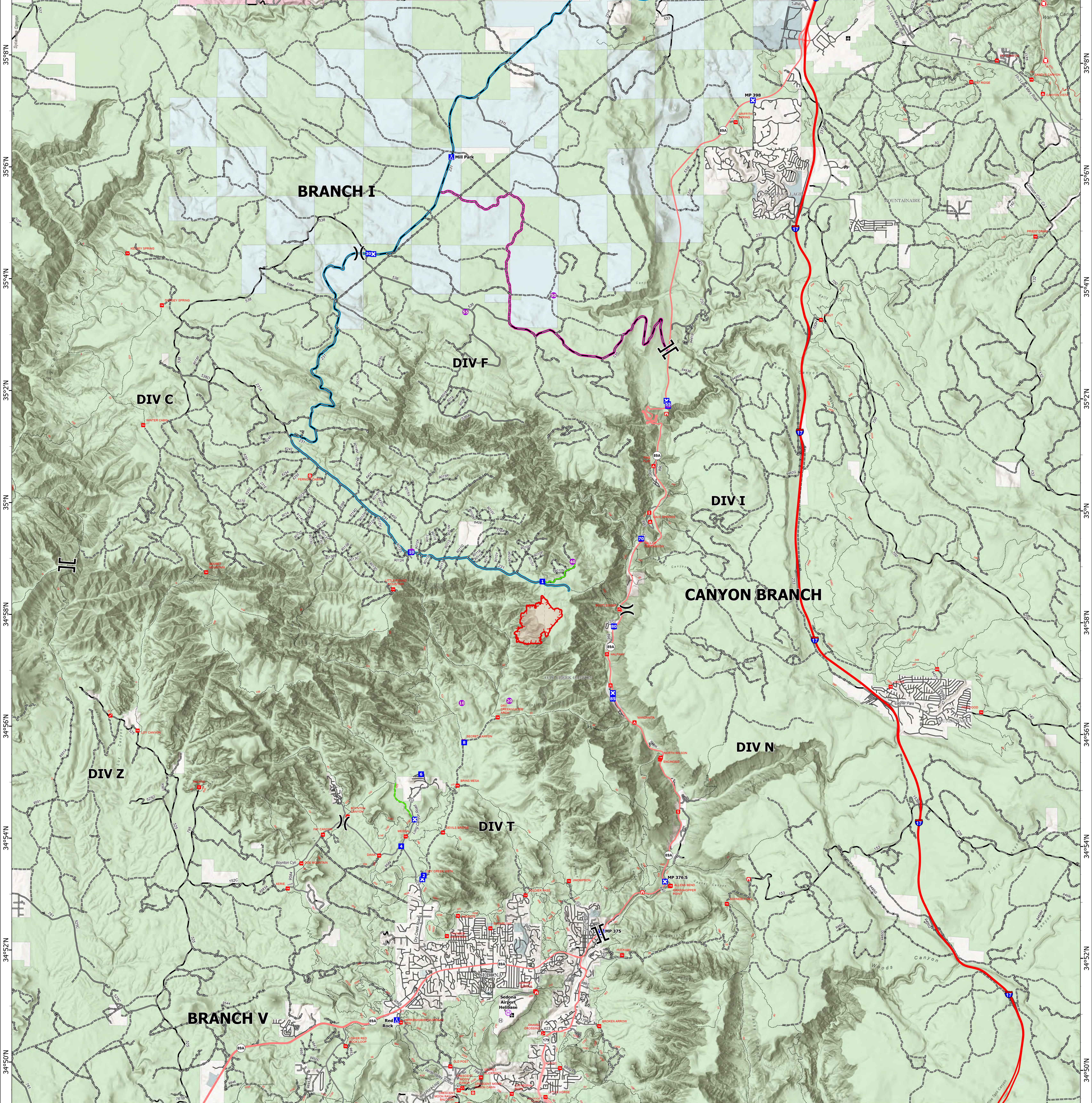
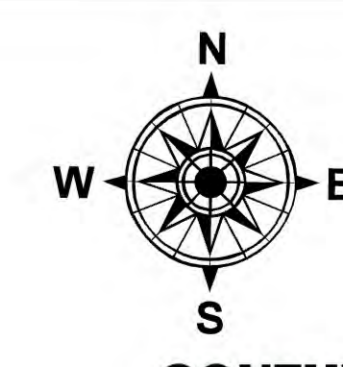



Feature Category	Label	Comments	Latitude WGS84 DDM	Longitude WGS84 DDM
Camp	Mill Park		34° 59.174' N	111° 49.583' W
Camp	Red Rock		35° 06.247' N	111° 48.769' W
Closure	FS 152		34° 50.812' N	111° 49.801' W
Closure	Long Canyon Road		34° 53.331' N	111° 49.272' W
Closure	FR 231		34° 54.398' N	111° 49.498' W
Closure	Secondary Road Closure at MP 390 at Oak Creek Vista turnout for Flagstaff south.		35° 01.917' N	111° 44.049' W
Closure	Secondary Road Closure from Sedona north at Slide Rock Park entrance.		34° 56.689' N	111° 45.171' W
Closure	MP 375 89A north closed at last turnout in Sedona. Law enforcement on site.		34° 52.409' N	111° 45.379' W
Closure	MP 376.5 Hard Closure		34° 53.324' N	111° 44.006' W
Closure	MP 398 Hard Closure HWY 89A just west of Forest Highlands Drive		35° 07.300' N	111° 42.219' W
Drop Point	1	5018M /231rd. Good parking	34° 58.671' N	111° 46.717' W
Drop Point	10		34° 59.177' N	111° 49.177' W
Drop Point	2		34° 53.396' N	111° 49.242' W
Drop Point	30		35° 04.506' N	111° 50.555' W
Drop Point	4		34° 53.919' N	111° 49.735' W
Drop Point	55	DP 55 at Oak Creek Vista	35° 01.856' N	111° 44.013' W
Drop Point	6	Porta Jon's / 1 hand wash	34° 55.208' N	111° 49.317' W
Drop Point	70	Drop point and add porta potties and hand wash. Request sent through canyon branch. 6/21/26	34° 59.450' N	111° 44.578' W
Drop Point	8		34° 55.783' N	111° 46.388' W
Drop Point	80		34° 57.880' N	111° 45.156' W
Drop Point	85	DP 85 at Slide Rock State Park	34° 56.587' N	111° 45.169' W
Staging Area			35° 01.824' N	111° 44.014' W



Transportation
Pocket
AZ-COF-000781
06/23/2026
341 acres at 06/22/2026 @ 2138hrs
 1:40,000 | SW IMT 2 GIS | 6/23/2026 0625
 Acres from IR
 North American 1983 Datum, Lat,Long Grid

<ul style="list-style-type: none"> () Division Break Branch Break ● Helispot ⊕ Helibase ⊙ Drop Point ⊗ Closure ⊠ Camp ⊡ Staging Area ⊢ Gate — Access Route — Uncontained Fire Edge — Wildfire Perimeter 	<ul style="list-style-type: none"> ⊠ Group Campground ⊠ Campground ⊠ Picnic Site ⊠ Group Picnic Site ⊠ Trailhead ⊠ OHV Staging Area ⊠ Swimming Site ⊠ Info Site/Fee Station ⊠ Interpretive Visitor Center ⊠ Lookout/Cabin ⊠ Wildlife Viewing Site ⊠ Interpretive Site 	<ul style="list-style-type: none"> ⊠ HIFLD Airport ⊠ HIFLD Helipad — Scenic Byway — Primary Highway — Secondary Highway — Paved Road — Gravel Road — Dirt (Not Paved) — Road, Not Maintained for Passenger Car — Private Roads — FS Closed Road 	<ul style="list-style-type: none"> — National Trail — Trail — Railroad — Forest Service Lands — DOE/DOD — State — Private — City/County/Local — County Subdivision Boundary — Incorporated Place
---	---	--	--

SOUTHWEST AREA
INCIDENT MANAGEMENT TEAM

