

ELKO FIRE HISTORY 1980 - 2006

Legend

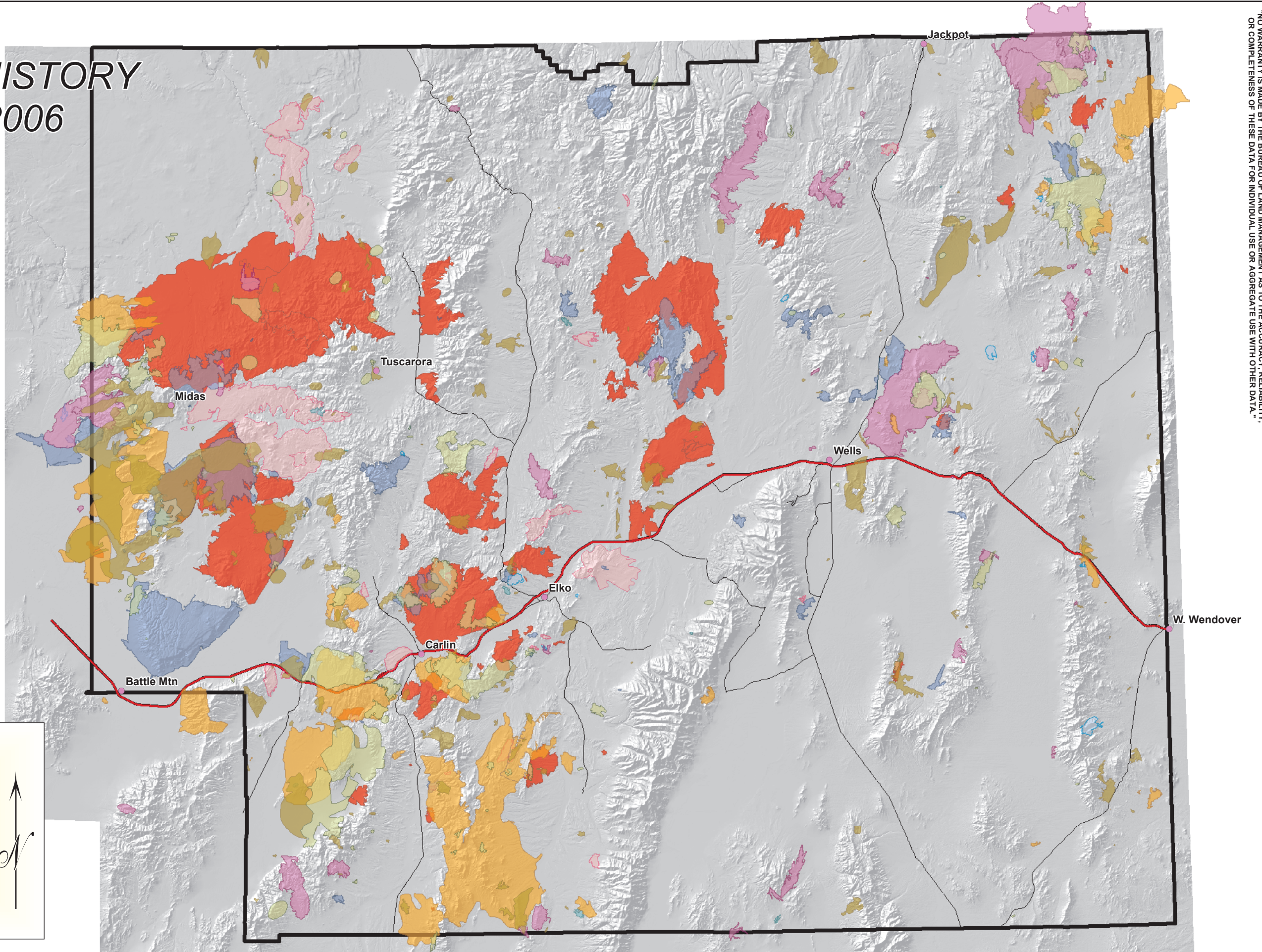
● Towns/Cities

Fire History **



- 1980-1989 Fires - 434,665 acres
- 1990-1998 Fires - 312,534 acres
- Fires 1999 - 580,202 acres
- Fires 2000 - 293,767 acres
- Fires 2001 - 325,127 acres
- Fires 2002 - 3,028 acres
- Fires 2003 - 7809 acres
- Fires 2004 - 921 acres
- Fires 2005 - 198,817 acres
- Fires 2006 - 945,812 acres

Major Roads

- Interstate 80
- Highway
- Elko BLM District

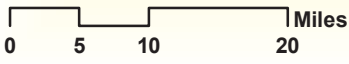



** NOTE: Acres represent mapped acres. Listed acres are for information purposes only and do not necessarily represent official acres.

1:875,000

UNITED STATES OF AMERICA
DEPARTMENT OF THE INTERIOR
BUREAU OF LAND MANAGEMENT
Elko Field Office - kmd - 09-12-06





"NO WARRANTY IS MADE BY THE BUREAU OF LAND MANAGEMENT AS TO THE ACCURACY, RELIABILITY, OR COMPLETENESS OF THESE DATA FOR INDIVIDUAL USE OR AGGREGATE USE WITH OTHER DATA."