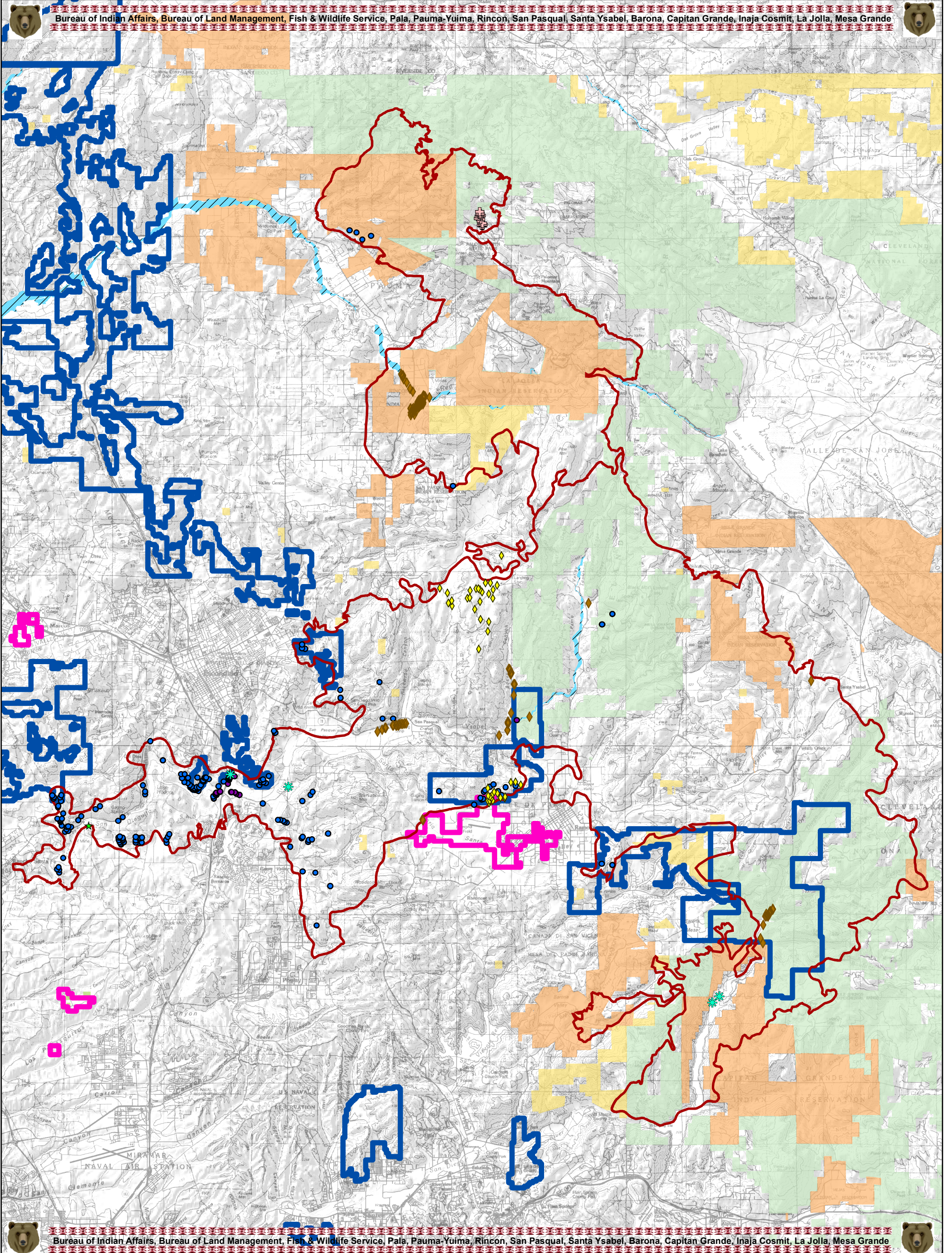




Poomacha/Witch Threatened/Endangered Wildlife Species



Bureau of Indian Affairs, Bureau of Land Management, Fish & Wildlife Service, Pala, Pauma-Yuima, Rincon, San Pasqual, Santa Ysabel, Barona, Capitan Grande, Inaja Cosmit, La Jolla, Mesa Grande

Bureau of Indian Affairs, Bureau of Land Management, Fish & Wildlife Service, Pala, Pauma-Yuima, Rincon, San Pasqual, Santa Ysabel, Barona, Capitan Grande, Inaja Cosmit, La Jolla, Mesa Grande

- SPECIES**
- ◆ Arroyo Toad
 - Least Bell's Vireo
 - ✚ Laguna Mountain Skipper
 - ★ San Diego Fairy Shrimp
 - ◆ Stephens' Kangaroo Rat
 - ★ Southwestern Willow Flycatcher
 - Coastal California Gnatcatcher

- OWNERSHIP**
- CA Gnatcatcher Final Critical Habitat
 - San Diego Fairy Shrimp Final Critical Habitat
 - Southwestern Willow Flycatcher Critical Habitat
 - BAER Fire Perimeters
 - Bureau of Land Management
 - Bureau of Indian Affairs
 - U.S. Fish and Wildlife Service
 - U.S. Forest Service



**** 2007 ****
Southern California



The data represented in this map were gathered from multiple sources which may vary in accuracy, scale and data. This map is for reference only and not an official declaration of boundaries or ownership.