

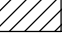




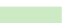
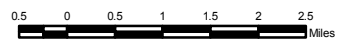


Bureau of Indian Affairs, Bureau of Land Management, Fish & Wildlife Service, Pala, Pauma-Yuima, Rincon, San Pasqual, Santa Ysabel, Barona, Capitan Grande, Inaja Cosmit, La Jolla, Mesa Grande

-  Quino Checkerspot Butterfly Sighting
 -  Quino Occurrence Complex
 -  Quino Critical Habitat
 -  Baer Harris Fire Perimeter
- OWNERSHIP**
-  Bureau of Land Management
 -  Bureau of Indian Affairs
 -  U.S. Fish and Wildlife Service
 -  U.S. Forest Service

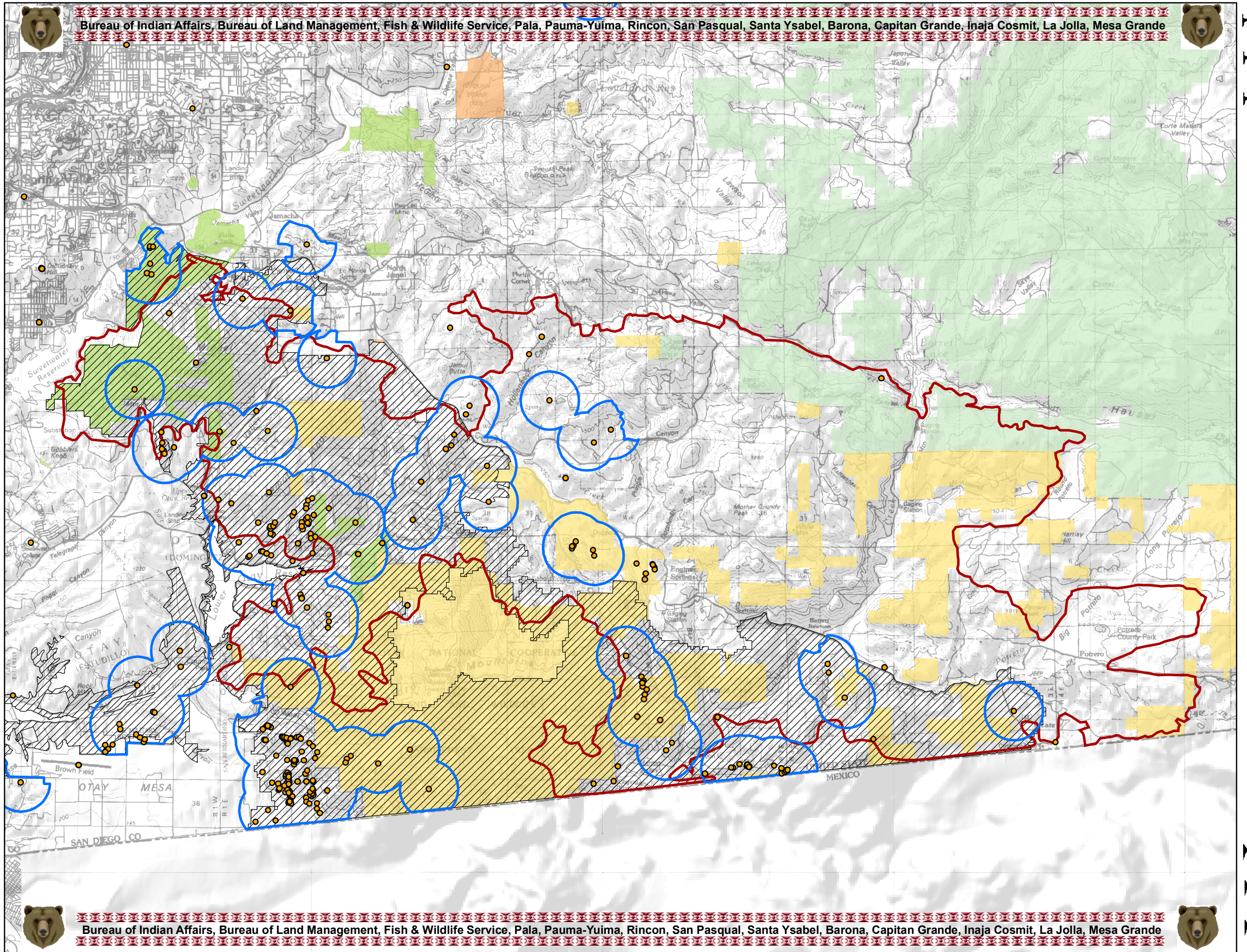


The data represented in this map were gathered from multiple sources which may vary in accuracy, scale and data. This map is for reference only and not an official declaration of boundaries or ownership.

**** 2007 ****
Southern California



Locational Map



Bureau of Indian Affairs, Bureau of Land Management, Fish & Wildlife Service, Pala, Pauma-Yuima, Rincon, San Pasqual, Santa Ysabel, Barona, Capitan Grande, Inaja Cosmit, La Jolla, Mesa Grande

Harris Threatened/Endangered Wildlife Species Monitoring

