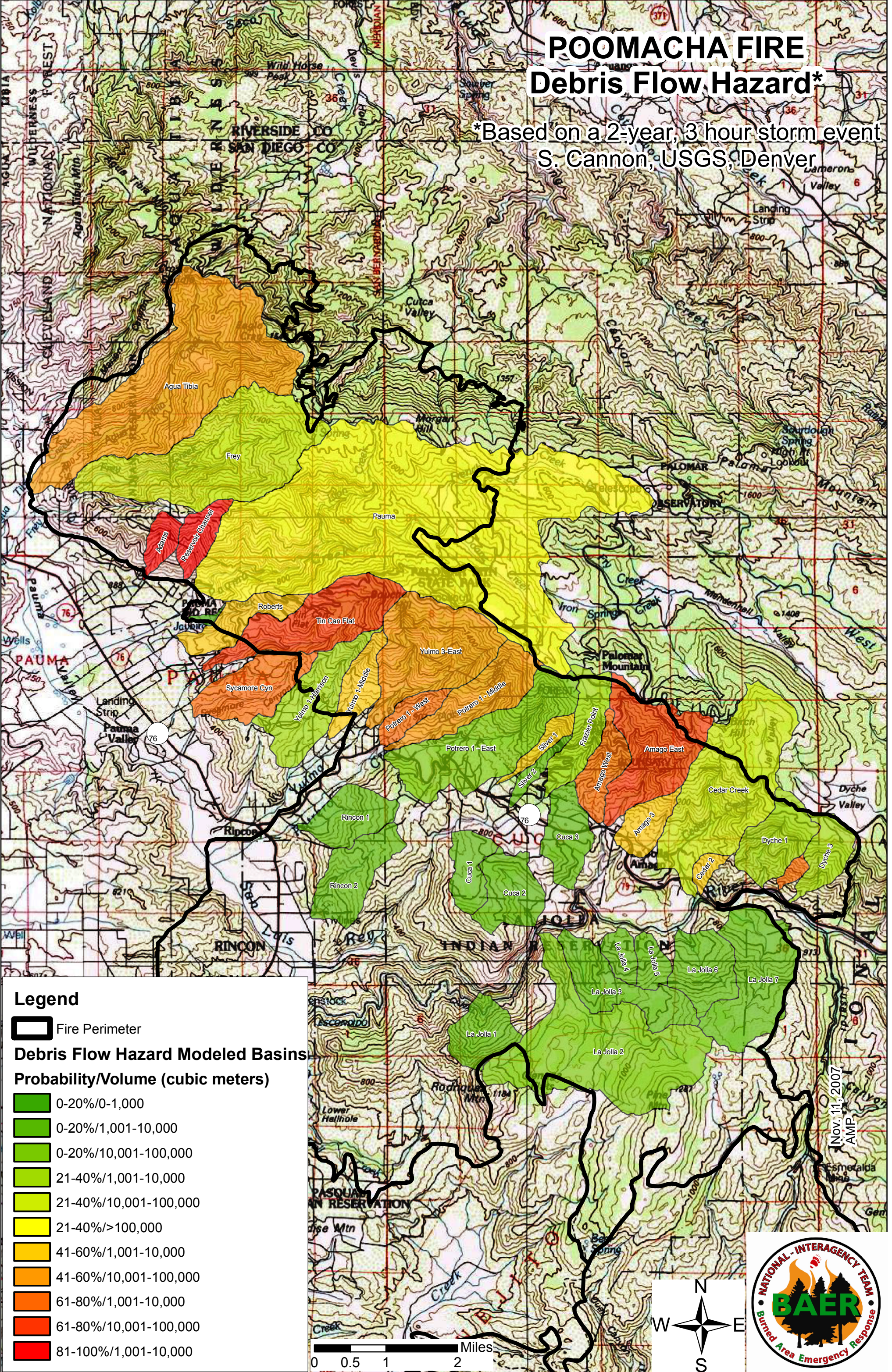


# POOMACHA FIRE Debris Flow Hazard\*

\*Based on a 2-year, 3 hour storm event  
S. Cannon, USGS, Denver



## Legend

Fire Perimeter

## Debris Flow Hazard Modeled Basins

### Probability/Volume (cubic meters)

- 0-20%/0-1,000
- 0-20%/1,001-10,000
- 0-20%/10,001-100,000
- 21-40%/1,001-10,000
- 21-40%/10,001-100,000
- 21-40%/>100,000
- 41-60%/1,001-10,000
- 41-60%/10,001-100,000
- 61-80%/1,001-10,000
- 61-80%/10,001-100,000
- 81-100%/1,001-10,000

0 0.5 1 2 Miles



Nov. 11, 2007  
AMP