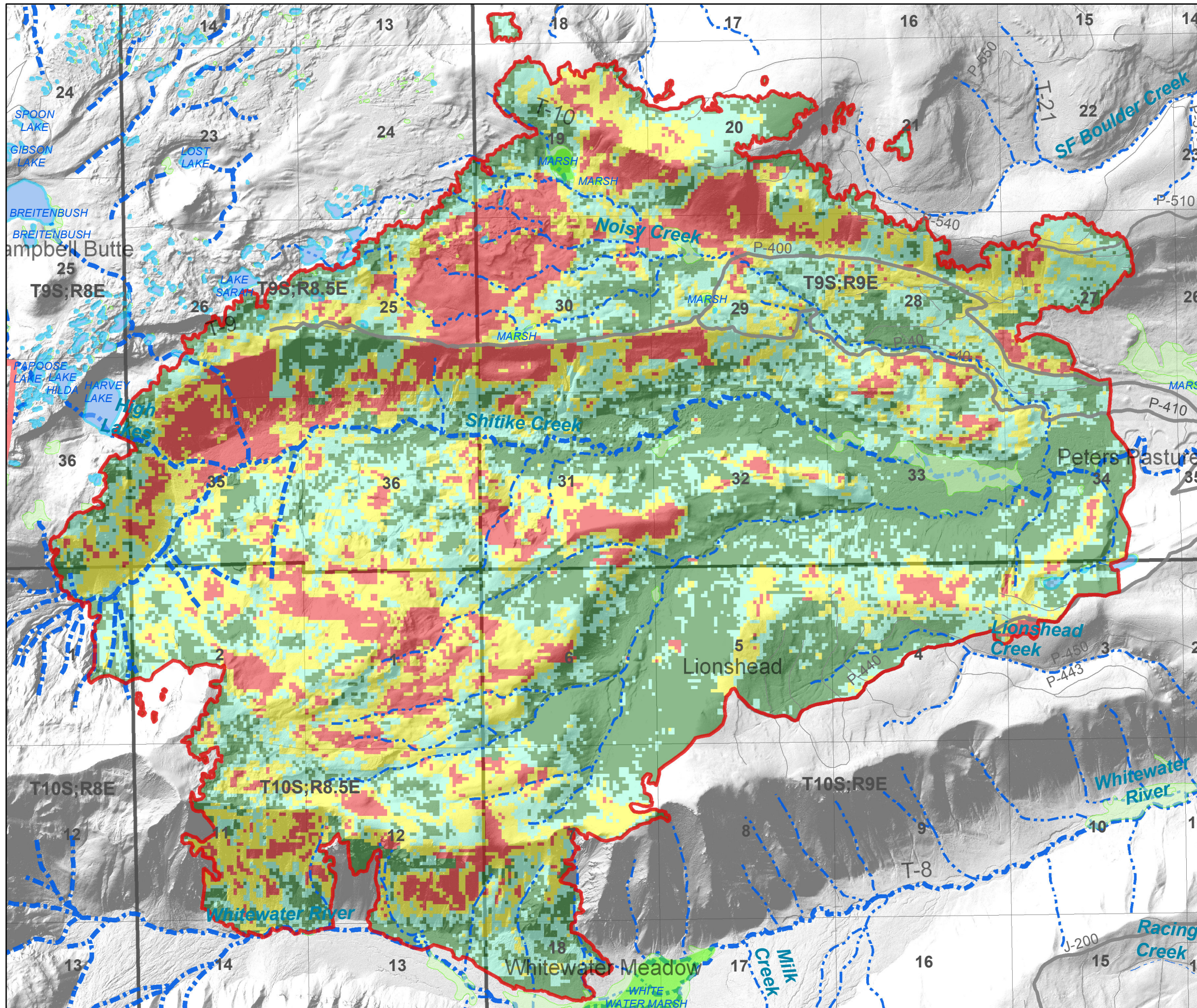


Waterfalls 2 Fire

Burn Severity



- High Burn Severity
- Moderate Burn Severity
- Low Burn Severity
- Unburned/Very Low Severity
- Unmapped Burn Severity
- Fire Perimeter
- Access Roads
- Open Roads
- Class 1 Stream
- Class 2 Stream
- Class 3 Stream
- Water
- Wetland
- Township/Range
- Sections

