

# How to connect to FS Image Services from ArcMap

Beginning in March 2017, a secure HTTPS server was set up for accessing the Forest Service Image Services. The initial purpose of this server is for connections from ArcGIS Online maps and web applications. However, beginning with ArcGIS 10.5, named secure URLs will be used for connections to the Image Services from both ArcGIS and online resources. Therefore, users are encouraged to move from using the IP URL (see section titled “Old Connection Information”) to the new URL.

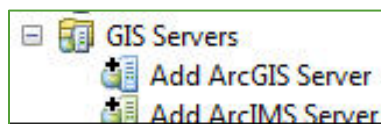
For making connections in ArcGIS Online, go to the section “[Connecting from AGOL or other web applications](#)” on page 4.

## Connect using ArcCatalog

1. Launch **ArcMap**.
2. If needed activate Catalog by either clicking on **Windows | Catalog** or by clicking on the Catalog icon in the main toolbar (see below).

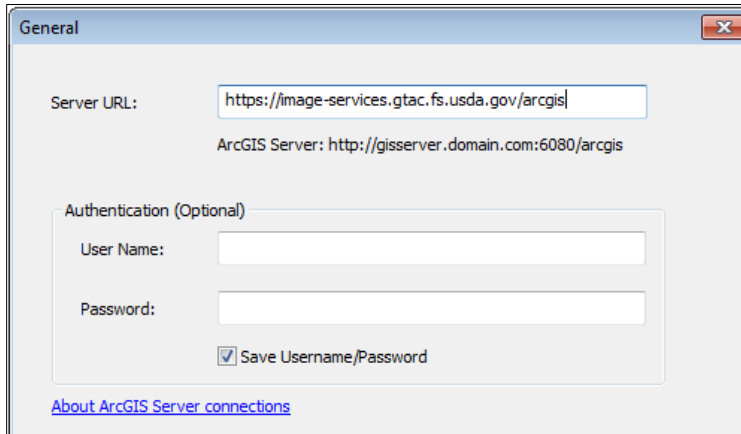


3. Dock the toolbar if desired.
4. Find the **GIS Servers** item, and click the plus sign next to it to expand the list.
5. Double-click on **Add ArcGIS Server** (see below).

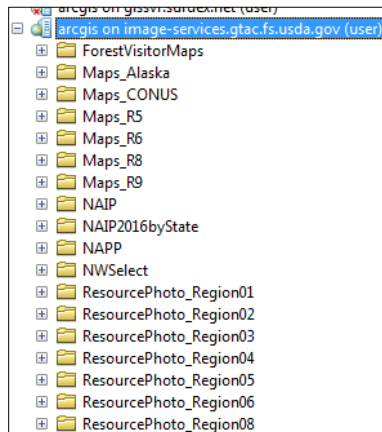


6. In the box next to Server URL:, type (or copy and paste) the following address:  
**<https://image-services.gtac.fs.usda.gov/arcgis>**

7. Leave the **User Name** and **Password** boxes blank, and click **Finish** (see below).



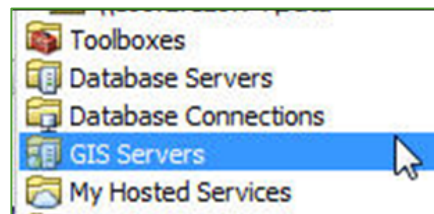
8. The service will be added to the list under GIS Servers.
9. Expand the lists by clicking on the plus signs to see the available data (see below).



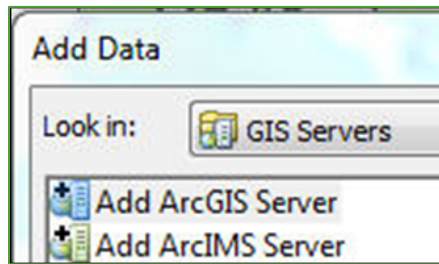
10. To add a service to your map, simply click-and-drag the service to your map window or Table of Contents.

## Connect Using Add Data in ArcMap

1. Click on the **Add Data** button, or right-click on **Layers** in the Table of Contents and choose **Add Data**.
2. Next to **Look in**, click on the drop down and select **GIS Servers** (see below).



- In the list, double-click on **Add ArcGIS Server** (see below).

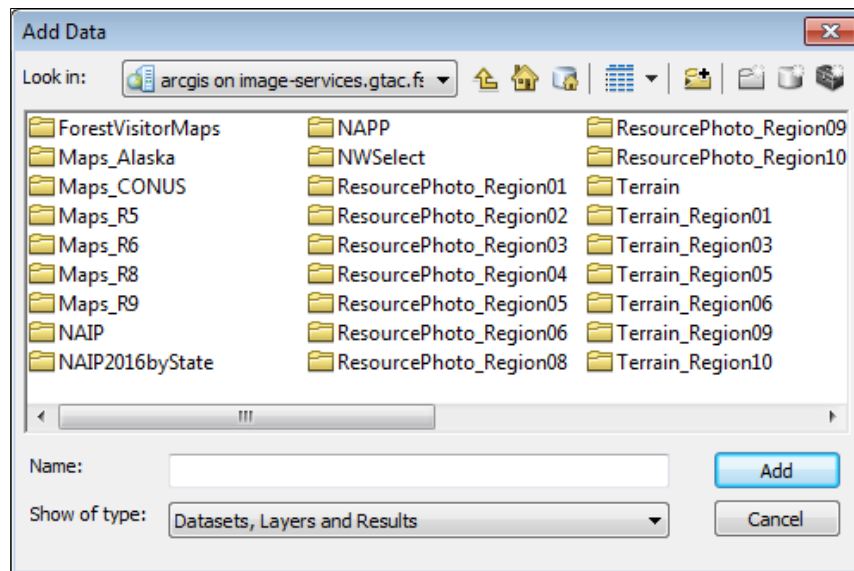


- Ensure that **Use GIS Services** is selected, and click on **Next >**.
- In the box next to Server URL (see below), type (or copy and paste) the following address: **https://image-services.gtac.fs.usda.gov/arcgis**



*Note: Users of ArcGIS 10.2 and later do not need to add the "/services" at the end.*

- Leave the User Name and Password boxes blank, and click **Finish**.
- The server **arcgis on image-services.gtac.fs.usda.gov/arcgis (user)** will be added to the list. Double click on it.
- The list of services will now appear in the Add Data dialog (see below.) To see what is available in a folder, double-click it. To move up a level, click on the **Up One Level** tool to the right of the Look in drop down.



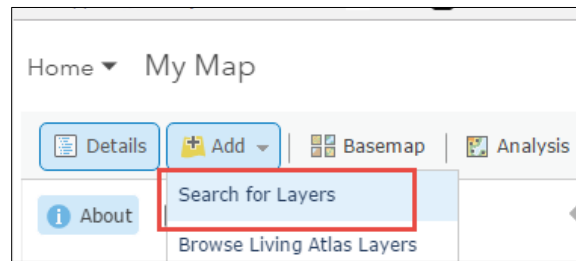
- To add the desired service, click on it then click on **Add**.

The server will now be available below **GIS Servers** in the Look in drop down until you remove it.

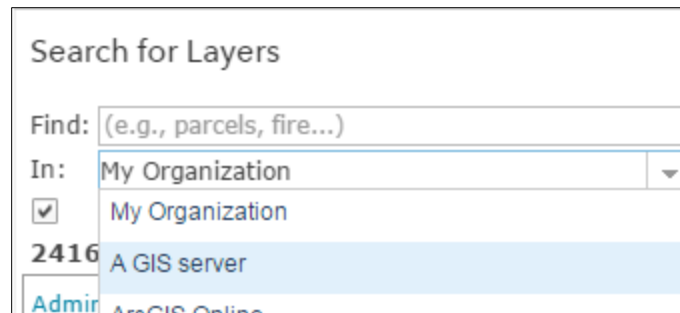
## Connecting from AGOL or other web applications

In order to access the Forest Service Image Services, you must have a FS ArcGIS Online Account. The account name is typically your FS short name with 'usfs' appended at the end. For information on how to obtain one, go to the [FS AGOL SharePoint page](#).

- Navigate to **arcgis.com**, and sign in with your 'usfs' credentials.
- Open an existing Map, or start a new one.
- On the left side of the page, click on the **Add** dropdown, then choose **Search for Layers** (see below).



- To the right of **In** at the top of the window, click on the dropdown and select **A GIS server** (see below).



- In the box next to URL, type or copy/paste the following: **https://image-services.gtac.fs.usda.gov/arcgis/rest/services**
- The services available from GTAC will appear in the list. Find those you are interested in and click on the **Add** link. Continue to use AGOL.

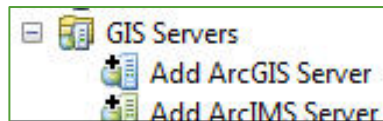
## Old Connection Information

### Connecting from Catalog

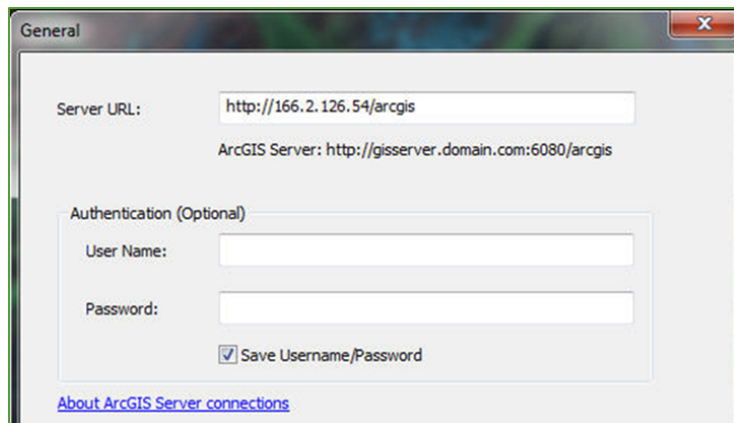
1. Launch **ArcMap** from the start menu by clicking **Start | Programs | ArcGIS | ArcMap**.
2. Close any start-up screens that may appear.
3. From within ArcMap, if needed activate Catalog by either clicking on **Windows | Catalog** or by clicking on the Catalog icon in the main toolbar (see below).



4. Dock the toolbar if desired.
5. Find the **GIS Servers** item, and click the plus sign next to it to expand the list.
6. Double-click on **Add ArcGIS Server** (see below).



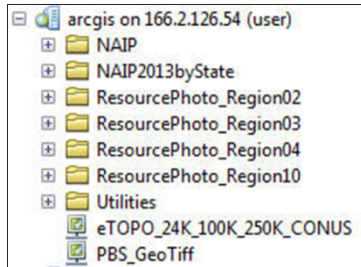
7. In the box next to Server URL:, type (or copy and paste) the following address:  
**http://166.2.126.54/arcgis**



*Note that if you are using Arc 10.1 or earlier, you will need to use the following instead:*  
<http://166.2.126.54/arcgis/services>

8. Leave the User Name and Password boxes blank, and click **Finish** (see above).
9. The service will be added to the list under GIS Servers.

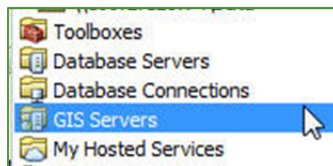
10. Expand the lists by clicking on the plus signs to see the available data (see below).



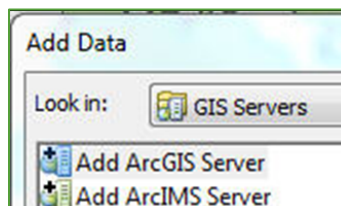
11. To add a service to your map, simply click-and-drag the service to your map window or Table of Contents.

## Connect Using Add Data in ArcMap

1. Click on the **Add Data** button, or right-click on **Layers** in the Table of Contents and choose **Add Data**.
2. Next to **Look in**, click on the drop down and select **GIS Servers** (see below).



3. In the list, double-click on **Add ArcGIS Server** (see below).

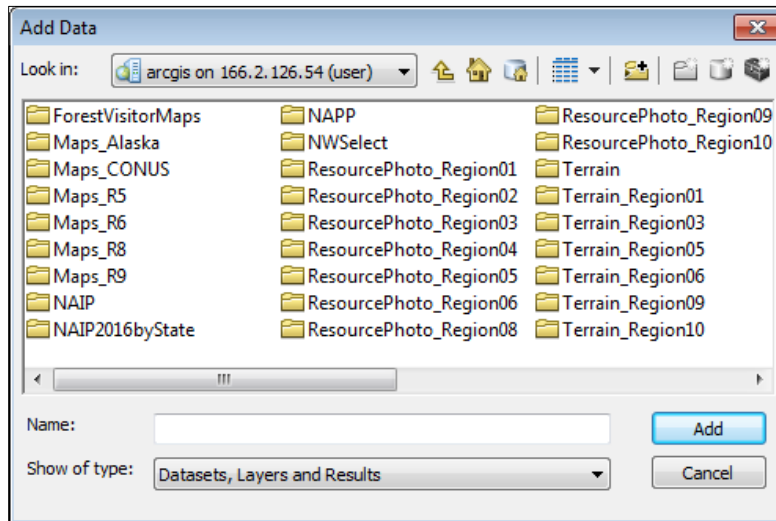


4. Ensure that **Use GIS Services** is selected, and click on **Next >**.
5. In the box next to Server URL (see below), type (or copy and paste) the following address: **http://166.2.126.54/arcgis**



*Note: Users of ArcGIS 10.2 and later do not need to add the "/services" at the end.*

6. Leave the User Name and Password boxes blank, and click **Finish**.
7. The server **arcgis on 166.2.126.54 (user)** will be added to the list. Double click on it.
8. The list of services will now appear in the Add Data dialog (see below.) To see what is available in a folder, double-click it. To move up a level, click on the **Up One Level** tool to the right of the Look in drop down.



9. To add the desired service, click on it then click on **Add**.

The server will now be available below **GIS Servers** in the Look in drop down until you remove it.