

110°47'30"W

110°47'0"W

110°46'30"W

110°46'0"W

110°45'30"W

110°45'0"W

110°44'30"W



Berry Incident WY-GTP-1621 Infrared Map



Imagery Date: 8/16/2016 @ 0217 MDT
Interpreted Acres: 426 acres
IRIN: Maximillian Wahlberg

44°1'30"N

44°1'0"N

44°0'30"N

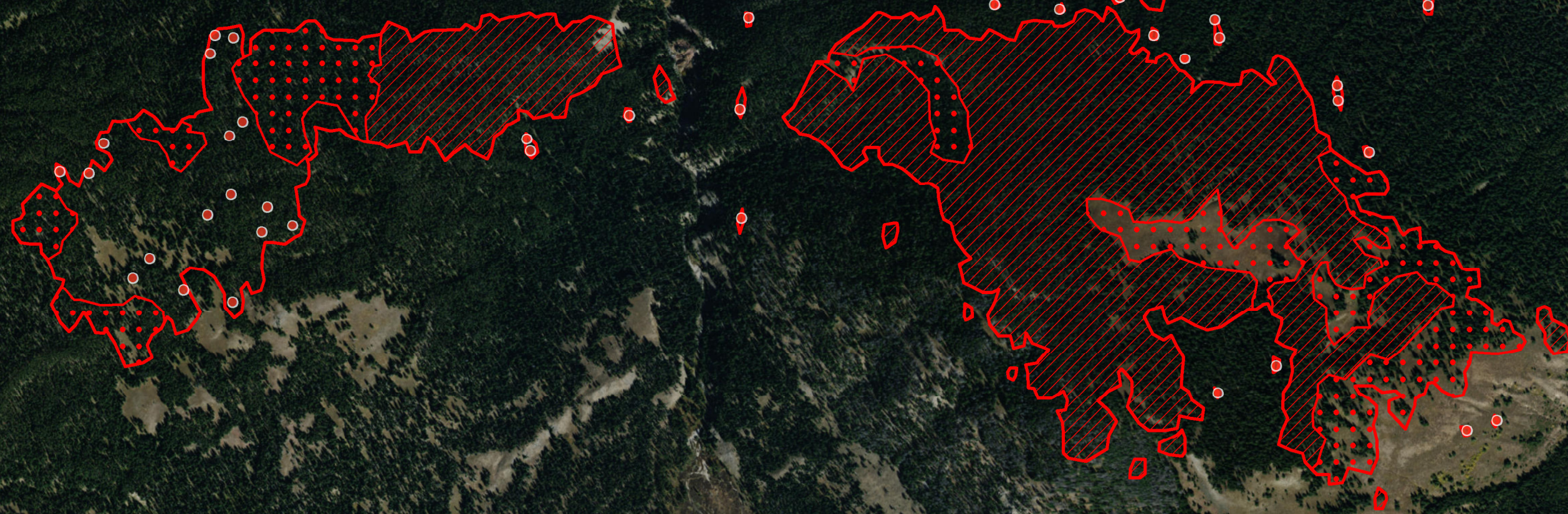
44°1'30"N

44°1'0"N

44°0'30"N

Legend

- Isolated Heat
- Heat Perimeter
- Intense Heat
- Scattered Heat



Source: Esri, DigitalGlobe, GeoEye, Earthstar Geographics, CNES/Airbus DS, USDA, USGS, AEX, Getmapping, Aerogrid, IGN, IGP, swisstopo, and the GIS User Community

110°47'30"W

110°47'0"W

110°46'30"W

110°46'0"W

110°45'30"W

110°45'0"W

110°44'30"W